



## DAS UHF Panel

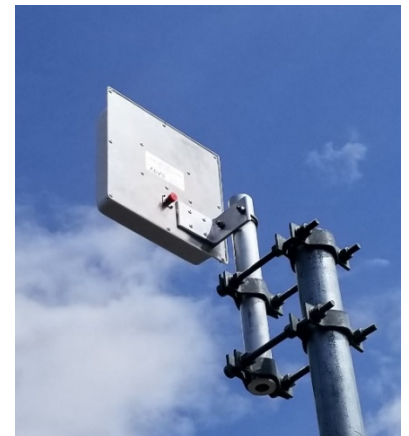
### Electrical Specifications

Frequency Range	450-512 MHz
Gain	5.6 dBd
VSWR (Return Loss)	<1.5:1
Passive IM 3 <sup>rd</sup> Order (2x20W)	-150 dBc
Peak Instantaneous Power (PIP)	15 kW
Power Input	250 W
Vertical Beamwidth	80°
Horizontal Beamwidth	180°
Input	7-16 DIN Female D7 4.3-10 DIN Female D4



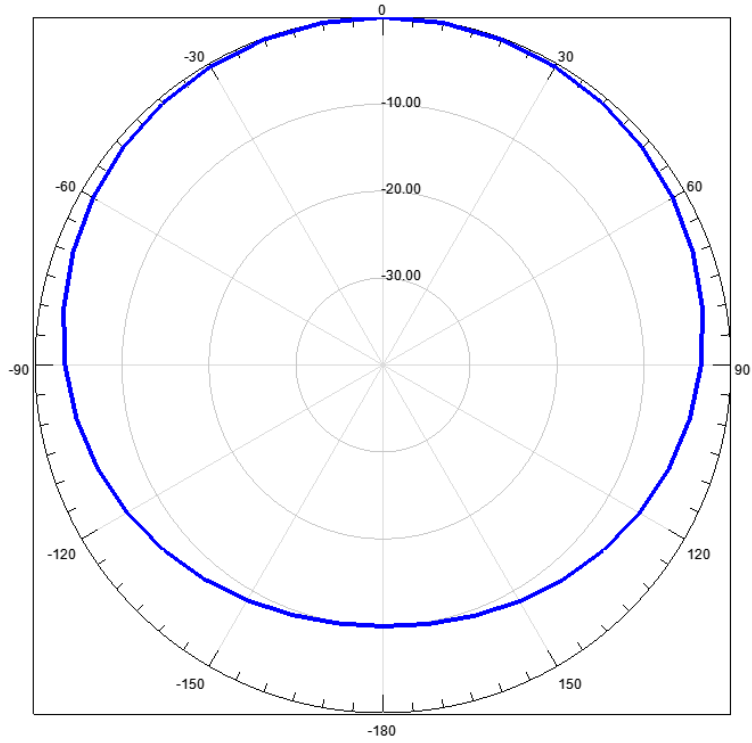
### Mechanical Specifications

Length x Width	12.5" x 12.5"
Depth	3.5"
Weight	3.0 lbs
Shipping Weight	4.0 lbs
Shipping Dimensions	L 13" W 13" H 7"
Projected Area	1 ft <sup>2</sup>
Lateral Thrust @ 100mph	40 lbs
Wind Gust Rating	125 mph



*\*Mount Hardware Included*

### Nominal Azimuth Pattern



### Standard Elevation Pattern

