

## VHF Collinear Omni Antenna

- Stable Electrical performance across entire band
- High quality mechanical package provides IP 66 rating

### Electrical Specifications

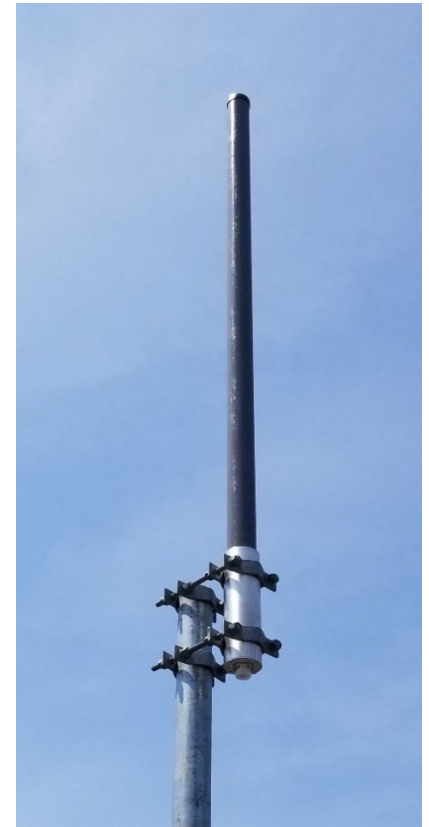
Frequency Range	Detail -0	140-150 MHz
	-1	150-160 MHz
	-2	160-174 MHz
	-3	156-166 MHz
Gain	2.5 dBd	
VSWR (Return Loss)	<1.5:1 (14dB)	
Passive IM 3 <sup>rd</sup> Order (2x20W)	-150 dBc	
Peak Instantaneous Power (PIP)	25 kW	
Power Input	500 W	
Vertical Beamwidth	20°	
Horizontal Beamwidth	Omni +/-0.5 dB	
Input	7-16 DIN Female	D7
	4.3-10 DIN Female	D4

### Mechanical Specifications

Configuration	Collinear Dipole	
Length	116"	
Radome Diameter	3"	
Weight	23 lbs	
Shipping Weight	30 lbs	
Shipping Dimensions	L	118"
	W	4"
	H	4"
Mounting Area	24"	
Suggested Clamps (not included)	PLMTKIT	

### Environmental Specifications

Operating Temperature	-58° to +140°F (-50°C to 60°C)
IP Rating	66
Projected Area	2.42 ft <sup>2</sup> (no ice)
	3.22 ft <sup>2</sup> (ice)
Lateral Thrust @ 100mph	97 lbs
Wind Gust Rating	150 mph



**Standard Elevation Pattern**

