

## High Gain 700/800 MHz V-POL Omni

- OEM Quality Broadband Performance
  - Rated for 500 Watts Continuous Power
  - -150 dBc PIM Rating
- Stable Electrical performance across entire band
- High quality mechanical package provides IP 66 rating
- Available with null-fill and/or beam tilt configurations

### Electrical Specifications

Frequency Range	740-870 MHz	
Gain	10.5 dBd	
VSWR (Return Loss)	<1.5:1 (14dB)	
Passive IM 3 <sup>rd</sup> Order (2x20W)	-150 dBc	
Peak Instantaneous Power (PIP)	25 kW	
Power Input	500 W	
Vertical Beamwidth	4.5°	
Horizontal Beamwidth	Omni +/-0.5 dB	
Input	7-16 DIN Female	D7
	4.3-10 DIN Female	D4
Beam Tilt	0-10 degree options	

### Mechanical Specifications

Configuration	Corporate Fed Dipole Array	
Length	184"	
Radome Diameter	3.0"	
Weight	32 lbs	
Shipping Weight	46 lbs	
Shipping Dimensions	L	186"
	W	4"
	H	4"
Mounting Area	24.0 x 3.5" diam. aluminum	
Suggested Clamps (not included)	PLMTKIT-1	

### Environmental Specifications

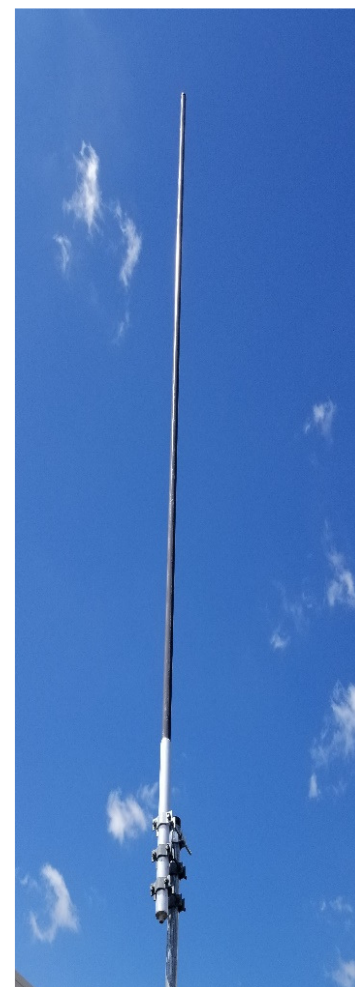
Operating Temperature	-40° to +140°F (-40°C to 60°C)	
IP Rating	66	
Projected Area	3.83 ft2 (no ice) 5.11 ft2 (with ice)	
Lateral Thrust @ 100mph	153 lbs.	
Wind Gust Rating	150 mph	

### ATC-GC7V110-**X-Y-Z**

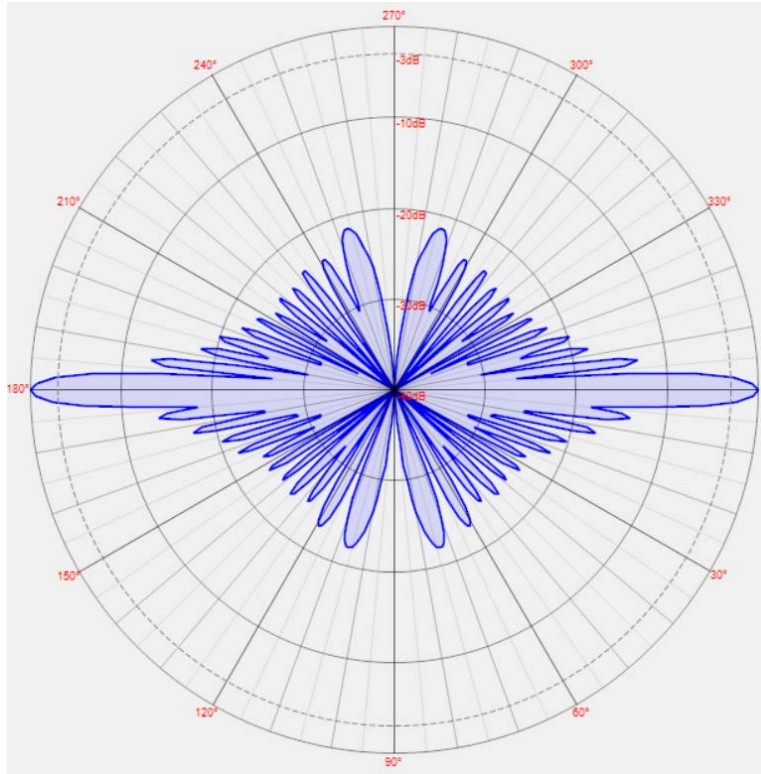
**X** = Input Connector [D7 for 7-16 DIN(f); D4 for 4.3-10 DIN(f)]

**Y** = Beam Tilt [1-10]

**Z** = Null Fill [NF]



**Standard Elevation Pattern**



**Heavy Null Fill**

