

700/800 MHz V-POL Omni

- OEM Quality Broadband Performance
 - Rated for 500 Watts Continuous Power
 - -150 dBc PIM Rating
- Stable Electrical performance across entire band
- High quality mechanical package provides IP 66 rating
- Available in null-fill and/or beam tilt configurations.

Electrical Specifications

Frequency Range	740-870 MHz	
Gain	5.5 dBd	
VSWR (Return Loss)	<1.5:1 (14dB)	
Passive IM 3 rd Order (2x20W)	-150 dBc	
Peak Instantaneous Power (PIP)	25 kW	
Power Input	500 W	
Vertical Beamwidth	17°	
Horizontal Beamwidth	Omni +/-0.25 dB	
Input	7-16 DIN Female	D7
	4.3-10 DIN Female	D4
Beam Tilt	0-10 degree options	

Mechanical Specifications

Configuration	Collinear Dipole	
Length	62"	
Radome Diameter	2.5"	
Weight	12 lbs	
Shipping Weight	18 lbs	
Shipping Dimensions	L	64"
	W	4"
	H	4"
Mounting Area	12.0 x 3.0" diam. aluminum	
Suggested Clamps (not included)	PLMTKIT	

Environmental Specifications

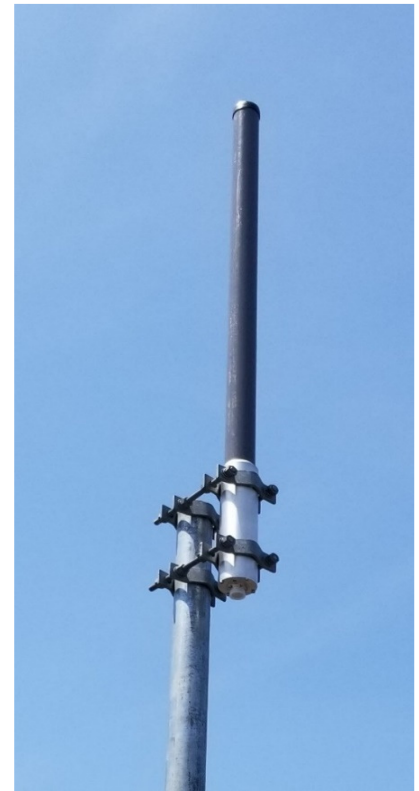
Operating Temperature	-40° to +140°F (-40°C to 60°C)
IP Rating	66
Projected Area	0.65 ft ² (no ice) 0.89 ft ² (with ice)
Lateral Thrust @ 100mph	26 lbs.
Wind Gust Rating	150 mph

ATC-GC7V40-**X**-**Y**-**Z**

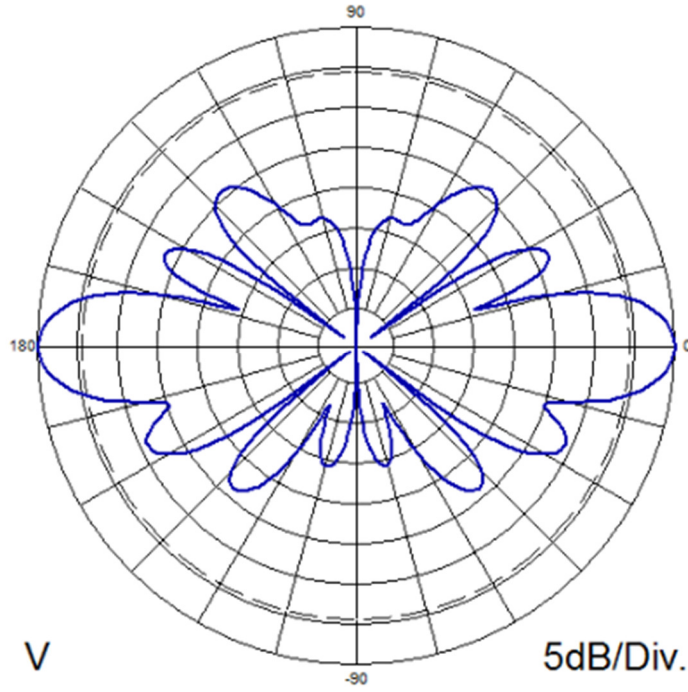
X = Input Connector [D7 for 7-16 DIN(f); D4 for 4.3-10 DIN(f)]

Y = Beam Tilt [1-10]

Z = Null Fill [NF]



Standard Elevation Pattern



Elevation Pattern, 5° Beam Tilt

