

700/800 MHz V-POL Omni Dual Antenna Dual Input

- OEM Quality Broadband Performance
 - Rated for 500 Watts Continuous Power
 - -150 dBc PIM Rating
- Stable Electrical performance across entire band
- High quality mechanical package provides IP 66 rating
- Available with null-fill and/or beam tilt configurations

Electrical Specifications

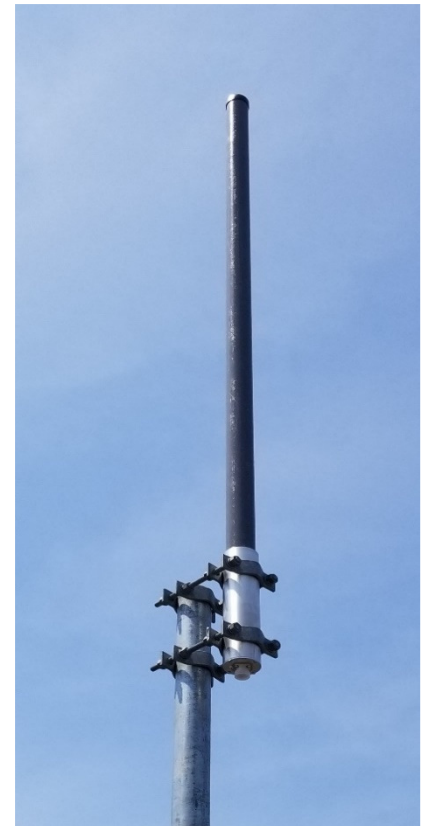
Frequency Range	740-870 MHz	
Gain	7.0 dBd per input	
VSWR (Return Loss)	<1.5:1 (14dB)	
Passive IM 3 rd Order (2x20W)	-150 dBc	
Peak Instantaneous Power (PIP)	25 kW	
Power Input	500 W	
Vertical Beamwidth	12°	
Horizontal Beamwidth	Omni +/-0.25 dB	
Input x 2	7-16 DIN Female	D7
	4.3-10 DIN Female	D4
Beam Tilt	0-10 degree options	
Port-to-Port Isolation	-40 dB	

Mechanical Specifications

Configuration	Corporate Fed Dipole Array	
Length	160"	
Radome Diameter	2.5"	
Weight	30 lbs	
Shipping Dimensions	L 168"	
	W 4"	
	H 4"	
Shipping Weight	44 lbs	
Mounting Area	24.0" x 3.0" diam. aluminum	
Suggested Clamps (not included)	PLMTKIT-1	

Environmental Specifications

Operating Temperature	-40° to +140°F (-40°C to 60°C)	
IP Rating	66	
Projected Area	1.94 ft ² (no ice)	
	2.72 ft ² (with ice)	
Lateral Thrust @ 100mph	78 lbs.	
Wind Gust Rating	150 mph	



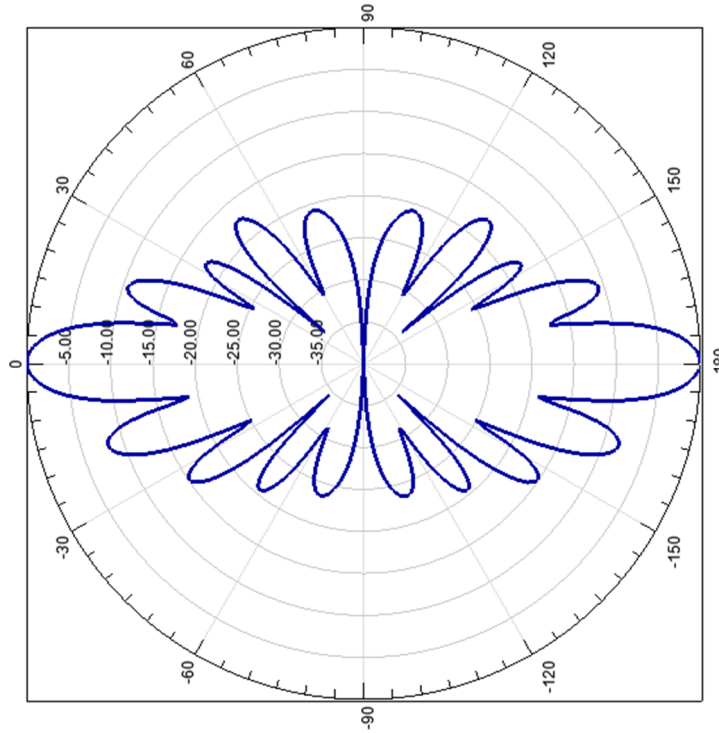
ATC-GC7V6060-**X-Y-Z**

X = Input Connector [D7 for 7-16 DIN(f); D4 for 4.3-10 DIN(f)]

Y = Beam Tilt [1-10]

Z = Null Fill [NF]

Standard Elevation Pattern



Null Fill

