

800/900 MHz V-POL Omni Antenna

- Stable Electrical performance across entire band
- High quality mechanical package provides IP 66 rating

Electrical Specifications

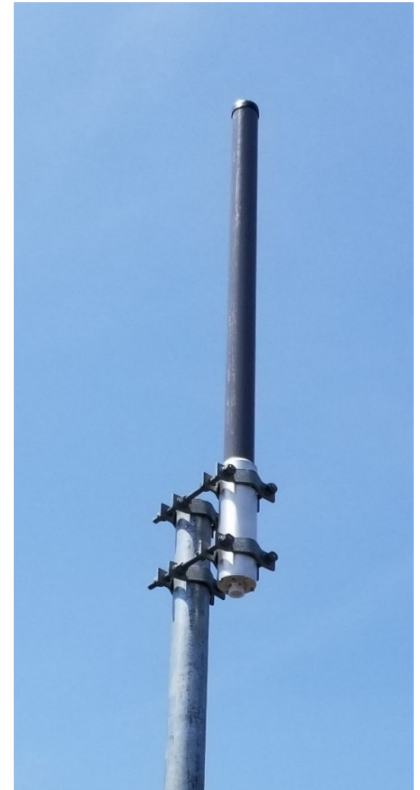
Frequency Range	870-970 MHz	
Gain	6 dBd	
VSWR (Return Loss)	<1.5:1 (14dB)	
Passive IM 3 rd Order (2x20W)	-150 dBc	
Peak Instantaneous Power (PIP)	25 kW	
Power Input	400 W	
Vertical Beamwidth	17°	
Horizontal Beamwidth	Omni +/-0.25 dB	
Input	7-16 DIN Female	D7
	4.3-10 DIN Female	D4
	N-Type Female	NF
Beam Tilt	0-10 degree options	

Mechanical Specifications

Configuration	Corporate Feed PC Dipole	
Length	55"	
Radome Diameter	2"	
Weight	11 lbs	
Shipping Weight	17 lbs	
Shipping Dimensions	L	57"
	W	4"
	H	4"
Mounting Area	12.0" x 2.5" diam. aluminum	
Suggested Clamps (not included)	PLMTKIT	

Environmental Specifications

Operating Temperature	-58° to +140°F (-50°C to 60°C)
IP Rating	66
Projected Area	0.76 ft ² (no ice) 1.15 ft ² (with ice)
Lateral Thrust @ 100mph	30 lbs-force
Wind Gust Rating	150 mph



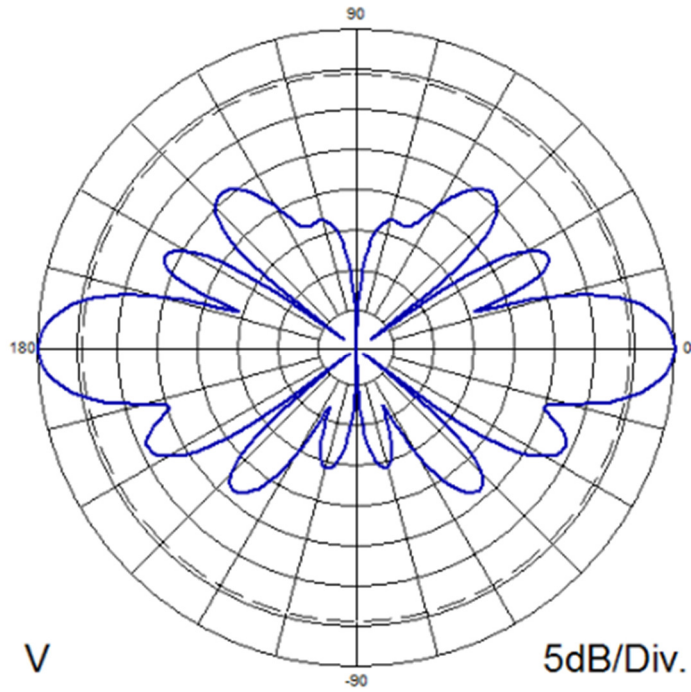
ATC-GC9V40-**X-Y-Z**

X = Input Connector [D7 for 7-16 DIN(f); D4 for 4.3-10 DIN(f); NF for N-Type(f)]

Y = Beam Tilt [1-10]

Z = Null Fill [NF]

Standard Elevation Pattern



Elevation Pattern, 5° Beam Tilt

