

700/800 MHz V-POL Omni Antenna

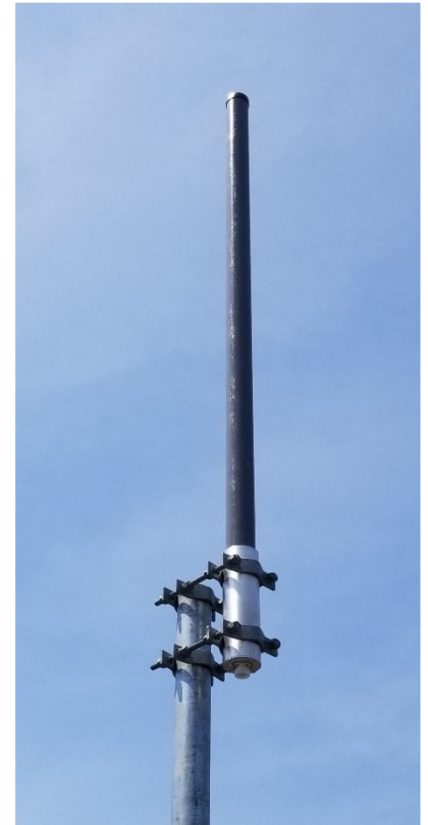
- Stable Electrical performance across entire band
- High quality mechanical package provides IP 66 rating

Electrical Specifications

| | | |
|--|---------------------|----|
| Frequency Range | 870-970 MHz | |
| Gain | 7.5 dBd | |
| VSWR (Return Loss) | <1.5:1 (14dB) | |
| Passive IM 3 rd Order (2x20W) | -150 dBc | |
| Peak Instantaneous Power (PIP) | 25 kW | |
| Power Input | 400W | |
| Vertical Beamwidth | 12° | |
| Horizontal Beamwidth | Omni +/-0.25 dB | |
| Input | 7-16 DIN Female | D7 |
| | 4.3-10 DIN Female | D4 |
| | N-Type Female | NF |
| Beam Tilt | 0-10 degree options | |

Mechanical Specifications

| | | |
|---------------------------------|-----------------------------|-----|
| Configuration | Corporate Feed PC Dipole | |
| Length | 74" | |
| Radome Diameter | 2" | |
| Weight | 15 lbs | |
| Shipping Weight | 20 lbs | |
| Shipping Dimensions | L | 76" |
| | W | 4" |
| | H | 4" |
| Mounting Area | 12.0" x 2.5" diam. aluminum | |
| Suggested Clamps (not included) | PLMTKIT | |



Environmental Specifications

| | | |
|-------------------------|---------------------------------|--|
| Operating Temperature | -58° to +140°F (-50°C to 60°C) | |
| IP Rating | 66 | |
| Projected Area | 1.03 ft ² (no ice) | |
| | 1.54 ft ² (with ice) | |
| Lateral Thrust @ 100mph | 41 lbs-force | |
| Wind Gust Rating | 150 mph | |

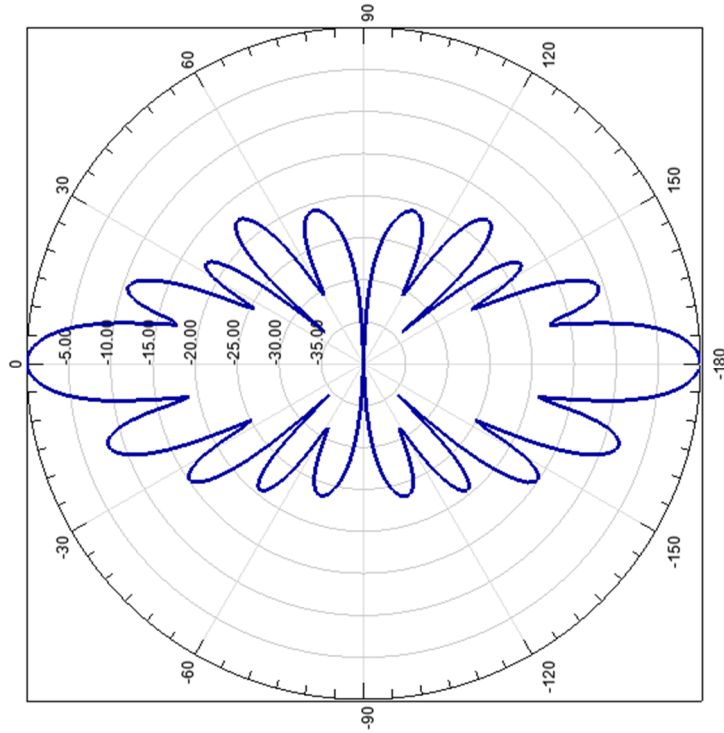
ATC-GC9V60-**X-Y-Z**

X = Input Connector [D7 for 7-16 DIN(f); D4 for 4.3-10 DIN(f); NF for N-Type(f)]

Y = Beam Tilt [1-10]

Z = Null Fill [NF]

Standard Elevation Pattern



Null Fill

