

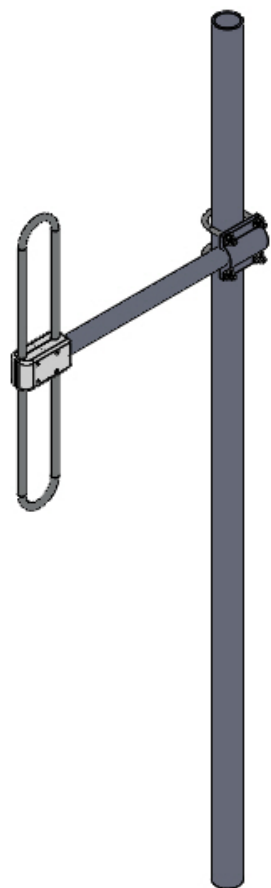
VHF Directional Exposed Dipole Antenna

- Broadband Performance covers entire band
- 100% Welded Construction
 - Increased Durability
 - Decreased Installation time
- Internally routed cable harness
 - Protects harness from elements and animals
 - Prevents damage during installation

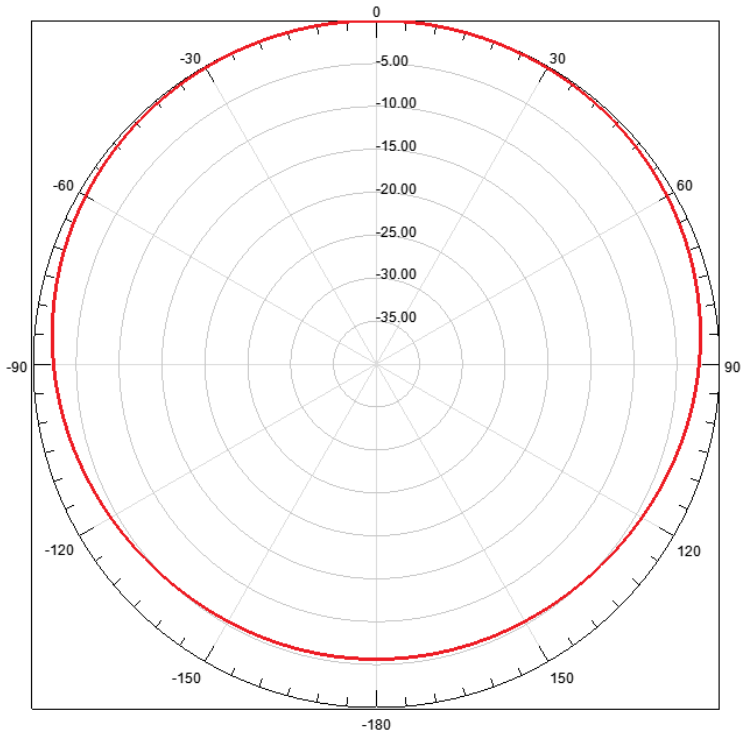
Electrical Specifications	
Frequency Range	137-174 MHz
Gain	2 dBd
VSWR (Return Loss)	<1.5:1 (14 dB)
Passive IM 3 rd Order (2x20W)	-150 dBc w DIN Connector
Peak Instantaneous Power (PIP)	20 kW
Power Input	250 W
Vertical Beamwidth	80°
Horizontal Beamwidth	200°
Input	N-Female

Mechanical Specifications	
Configuration	Single Dipole
Length	34"
Weight	6 lbs
Shipping Weight	8 lbs
Shipping Dimensions	L 36" W 24" H 5"
Mounting Area	12.0" x 2.375" diam. Aluminum
Mount Clamps	PLCXXKIT

Environmental Specifications	
Temperature Range	-40° to 140°F (-40° to 60°C)
Wind Velocity (Max)	175 MPH
Wind Velocity -1/2" Ice (Max)	125 MPH
Projected Area	0.45 ft ² (no ice)
Lateral Thrust @ 100mph	18 lbs
Dust Water Ingress	IP66



Azimuth



Standard Elevation

