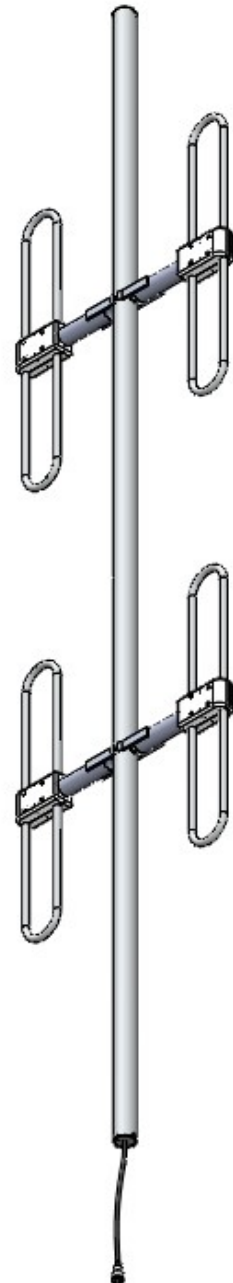




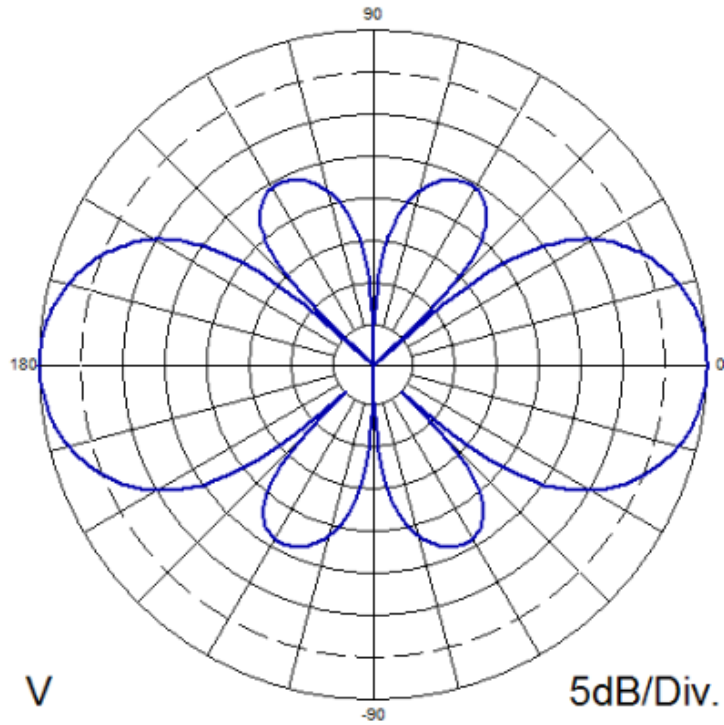
## VHF Directional Exposed Dipole Antenna

Electrical Specifications	
Frequency Range	137-174 MHz
Gain	5 dBd
VSWR (Return Loss)	<1.5:1 (14 dB)
Passive IM 3 <sup>rd</sup> Order (2x20W)	-150 dBc
Peak Instantaneous Power (PIP)	25 kW
Power Input	500 W
Vertical Beamwidth	35°
Horizontal Beamwidth	104°
Input	7-16 DIN-Female D7 4.3-10 DIN-Female D4
Beam Tilt	0° std. or -3°

Mechanical Specifications	
Configuration	4 dipoles (2 bays)
Length	138"
Weight	32 lbs
Shipping Weight	50 lbs
Shipping Dimensions	L 146" W 26" H 4"
Projected Area	3.2 ft <sup>2</sup> (no ice) 3.4 ft <sup>2</sup> (with ice)
Lateral Thrust @ 100mph	128 lbs
Mounting Area	20.0" x 2.375" diam. Aluminum
Suggested Clamps (not included)	PLMTKIT
Wind Gust Rating	150 mph



**Standard Elevation Pattern**



**Azimuth**

