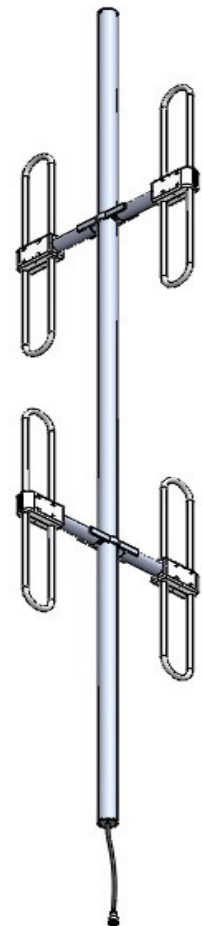


## VHF Omni Exposed Dipole Antenna

- Broadband Performance covers entire band
- 100% Welded Construction
  - Increased Durability
  - Decreased Installation time
- Internally routed cable harness
  - Protects harness from elements and animals
  - Prevents damage during installation

Electrical Specifications	
Frequency Range	136-174 MHz
Gain	3 dBd
VSWR (Return Loss)	<1.5:1 (14 dB)
Passive IM 3 <sup>rd</sup> Order (2x20W)	-150 dBc
Peak Instantaneous Power (PIP)	25 kW
Power Input	750 W
Vertical Beamwidth	35°
Horizontal Beamwidth	Omni +/-0.5 dB
Input	7-16 DIN-Female D7 4.3-10 DIN-Female D4 20" pigtail
Mechanical Specifications	
Configuration	4 dipoles (2 bays) Turnstile stacked Single section support
Length	138"
Weight	24.5 lbs
Shipping Weight	35 lbs
Shipping Dimensions	L 152" W 28" H 32"
Mounting Area	20.0" x 2.375" diam. Aluminum
Suggested Clamps (not included)	PLMTKIT
Environmental Specifications	
Temperature Range	-40° to 140°F (-40° to 60°C)
Wind Velocity (Max)	149 MPH
Wind Velocity -1/2" Ice (Max)	115 MPH
Projected Area	2.3 ft <sup>2</sup> (no ice) 2.5 ft <sup>2</sup> (with ice)
Lateral Thrust @ 100mph	92 lbs



### Standard Elevation Pattern

