

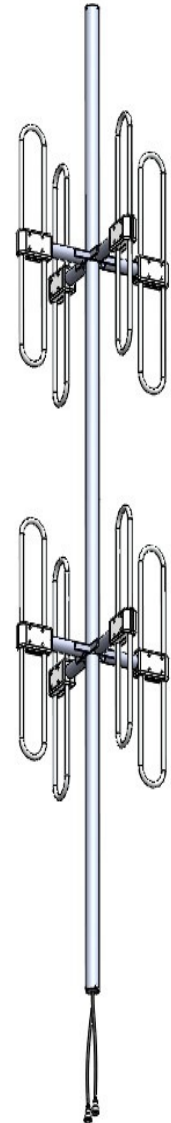
VHF Omni Exposed Dipole Antenna

- Broadband Performance covers entire band
- 90 Degree Dipole Spacing at each bay
 - Provides superior Az Pattern
- 100% Welded Construction
 - Increased Durability
 - Decreased Installation time
- Internally routed cable harness
 - Protects harness from elements and animals
 - Prevents damage during installation

Electrical Specifications	
Frequency Range	136-174 MHz
Gain	3 dBd per input
VSWR (Return Loss)	<1.5:1 (14 dB)
Passive IM 3 rd Order (2x20W)	-150 dBc
Peak Instantaneous Power (PIP)	25 kW
Power Input	750 W
Vertical Beamwidth	2 x 35°
Horizontal Beamwidth	Omni +/-0.5 dB
Input	7-16 DIN-Female D7 4.3-10 DIN-Female D4 20" pigtail

Mechanical Specifications	
Configuration	8 dipoles (2 bays) Turnstile stacked Dual antenna operation Dual section support
Length	240"
Weight	68 lbs
Shipping Weight	
Shipping Dimensions	L 248" W 24 H 24
Mounting Area	30.0" x 2.375" diam. Aluminum
Suggested Clamps (not included)	PLMTKIT-1

Environmental Specifications	
Temperature Range	-40° to 140°F (-40° to 60°C)
Wind Velocity (Max)	149 MPH
Wind Velocity -1/2" Ice (Max)	115 MPH
Projected Area	4.2 ft ² (no ice) 4.5 ft ² (with ice)
Lateral Thrust @ 100mph	168 lbs



Standard Elevation Pattern

