

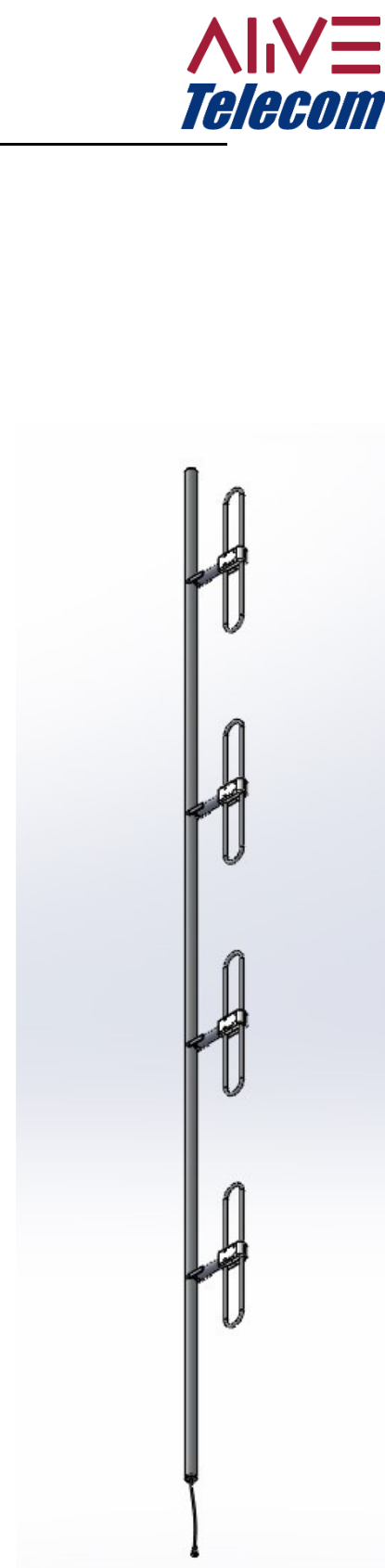
## VHF Directional Exposed Dipole Antenna

- Broadband Performance covers entire band
- 100% Welded Construction
  - Increased Durability
  - Decreased Installation time
- Internally routed cable harness
  - Protects harness from elements and animals
  - Prevents damage during installation

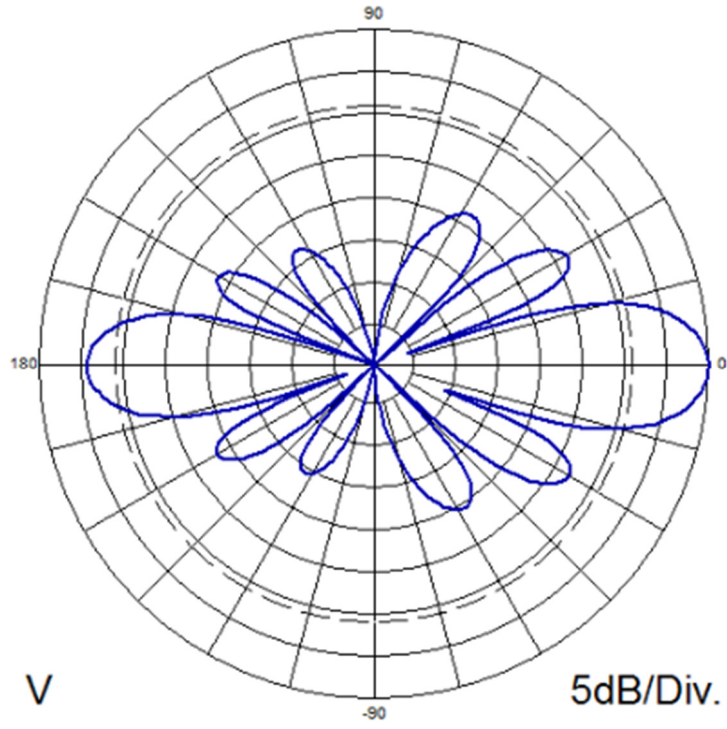
Electrical Specifications	
Frequency Range	136-174 MHz
Gain	9 dBd
VSWR (Return Loss)	<1.5:1 (14 dB)
Passive IM 3 <sup>rd</sup> Order (2x20W)	-150 dBc
Peak Instantaneous Power (PIP)	25 kW
Power Input	750 W
Vertical Beamwidth	17°
Horizontal Beamwidth	176°
Input	7-16 DIN-Female D7 4.3-10 DIN-Female D4 20" pigtail
Beam Tilt	0° std. or -3°

Mechanical Specifications	
Configuration	4 dipoles (4 bays) Single-sided Single section support
Length	240"
Weight	35 lbs
Shipping Weight	
Shipping Dimensions	L 248" W 20" H 4"
Mounting Area	20.0" x 2.375" diam. Aluminum
Suggested Clamps (not included)	PLMTKIT-1

Environmental Specifications	
Temperature Range	-40° to 140°F (-40° to 60°C)
Wind Velocity (Max)	150 MPH
Wind Velocity -1/2" Ice (Max)	115 MPH
Projected Area	4.2 ft <sup>2</sup> (no ice) 4.5 ft <sup>2</sup> (with ice)
Lateral Thrust @ 100mph	168 lbs



**Standard Elevation Pattern**



**Azimuth**

