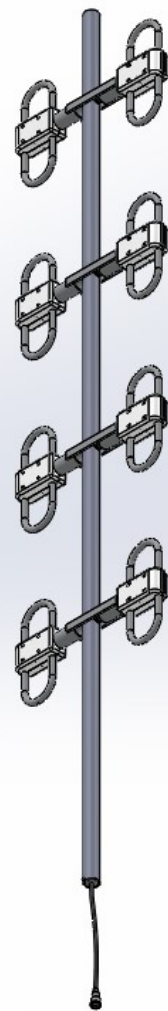




## UHF Directional Exposed Dipole Antenna

Electrical Specifications	
Frequency Range	330-420 MHz
Gain	8 dBd
VSWR (Return Loss)	<1.5:1 (14 dB)
Passive IM 3 <sup>rd</sup> Order (2x20W)	-150 dBc
Peak Instantaneous Power (PIP)	25 kW
Power Input	500 W
Vertical Beamwidth	17°
Horizontal Beamwidth	74°
Input	7-16 DIN-Female D7 4.3-10 DIN-Female D4
Beam Tilt	

Mechanical Specifications	
Configuration	8 dipoles (4 bays)
Length	118"
Weight	18 lbs
Shipping Weight	lbs
Shipping Dimensions	L " W " H "
Projected Area	3.0 ft <sup>2</sup> (no ice) 3.2 ft <sup>2</sup> (with ice)
Lateral Thrust @ 100mph	120 lbs
Mounting Area	20.0" x 1.9" diam. Aluminum
Suggested Clamps (not included)	PLMTKIT
Wind Gust Rating	150 mph



**Standard Elevation Pattern**

**Heavy Null Fill**