

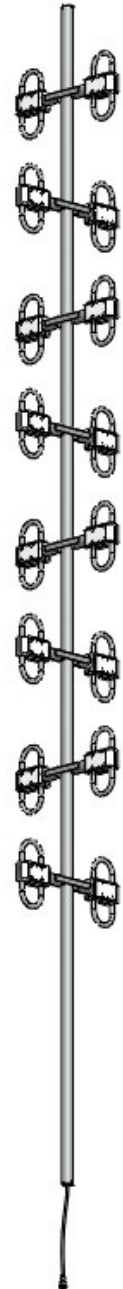
## UHF Omni Exposed Dipole Antenna

- Broadband Performance covers entire band
- 100% Welded Construction
  - Increased Durability
  - Decreased Installation time
- Internally routed cable harness
  - Protects harness from elements and animals
  - Prevents damage during installation
- Highest gain omni antenna in the UHF Band

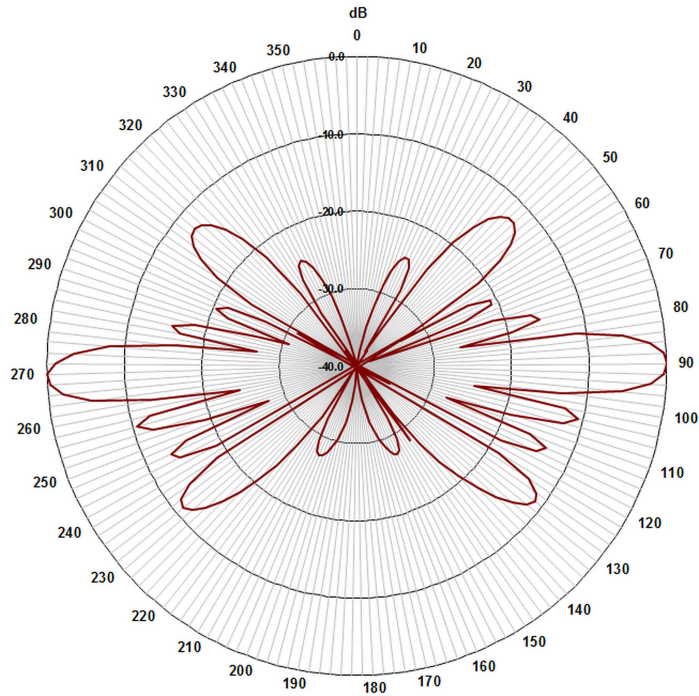
Electrical Specifications	
Frequency Range	330-420 MHz
Gain	9 dBd
VSWR (Return Loss)	<1.5:1 (14 dB)
Passive IM 3 <sup>rd</sup> Order (2x20W)	-150 dBc
Peak Instantaneous Power (PIP)	25 kW
Power Input	500 W
Vertical Beamwidth	9°
Horizontal Beamwidth	Omni +/-0.5 dB
Input	7-16 DIN-Female D7 4.3-10 DIN-Female D4

Mechanical Specifications	
Configuration	16 Dipoles (8 Bays) Turnstile stacked Dual section support
Length	197"
Weight	44 lbs
Shipping Weight	lbs
Shipping Dimensions	L 203" W 19" H 19"
Mounting Area	30.0" x 1.9" diam. Aluminum
Suggested Clamps (not included)	PLMTKIT-1

Environmental Specifications	
Temperature Range	-40° to 140°F (-40° to 60°C)
Wind Velocity (Max)	150 MPH
Wind Velocity -1/2" Ice (Max)	125 MPH
Projected Area	3.5 ft <sup>2</sup> (no ice) 3.8 ft <sup>2</sup> (with ice)
Lateral Thrust @ 100mph	140 lbs



### Standard Elevation Pattern



### Heavy Null Fill

