

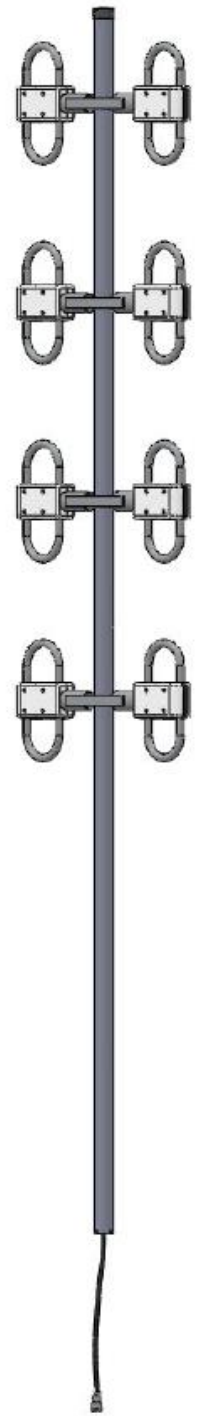
UHF Offset Pattern Exposed Dipole Antenna

- Broadband Performance covers entire band
- 100% Welded Construction
 - Increased Durability
 - Decreased Installation time
- Internally routed cable harness
 - Protects harness from elements and animals
 - Prevents damage during installation

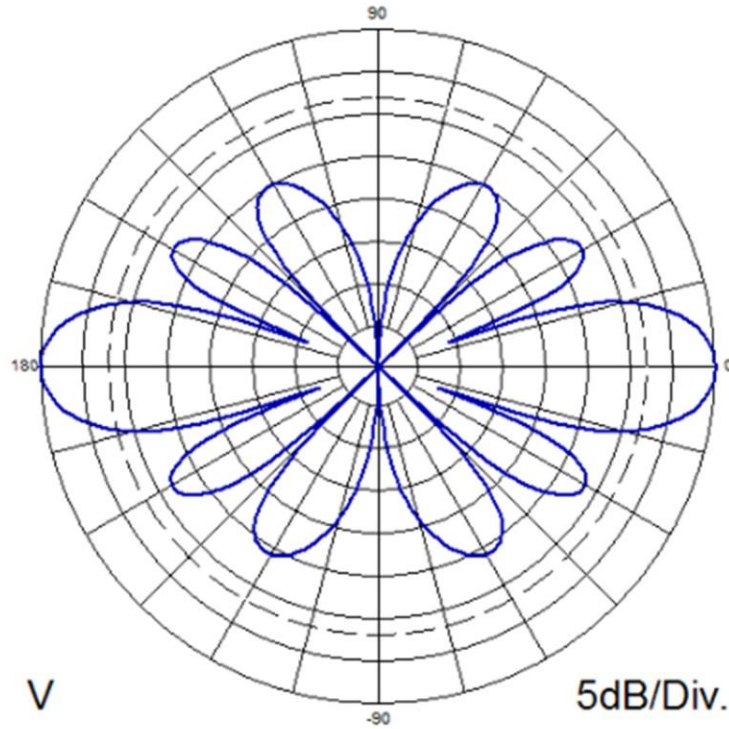
Electrical Specifications		
Frequency Range	400-520 MHz	
Gain	5 dBd per input	
VSWR (Return Loss)	<1.5:1 (14 dB)	
Passive IM 3 rd Order (2x20W)	-150 dBc	
Peak Instantaneous Power (PIP)	25 Kw	
Power Input	500 W	
Vertical Beamwidth	34°	
Horizontal Beamwidth	70°	
Input	7-16 DIN-Female	D7
	4.3-10 DIN-Female	D4
	12" pigtails	
Beam Tilt	0° std. or -3°	

Mechanical Specifications		
Configuration	4 dipoles (2 bays) per input	
Length	120"	
Weight	23 lbs	
Shipping Weight	31 lbs	
Shipping Dimensions	L	126"
	W	26.5"
	H	3.75"
Mounting Area	20.0" x 1.9" diam. Aluminum	
Suggested Clamps (not included)	PLMTKIT-1	

Environmental Specifications	
Temperature Range	-40° to 140°F (-40° to 60°C)
Wind Velocity (Max)	150 MPH
Wind Velocity -1/2" Ice (Max)	115 MPH
Projected Area	2.24 ft ² (no ice)
	2.84 ft ² (with ice)
Lateral Thrust @ 100mph	89.6 lbs



Standard Elevation Pattern



Azimuth

