

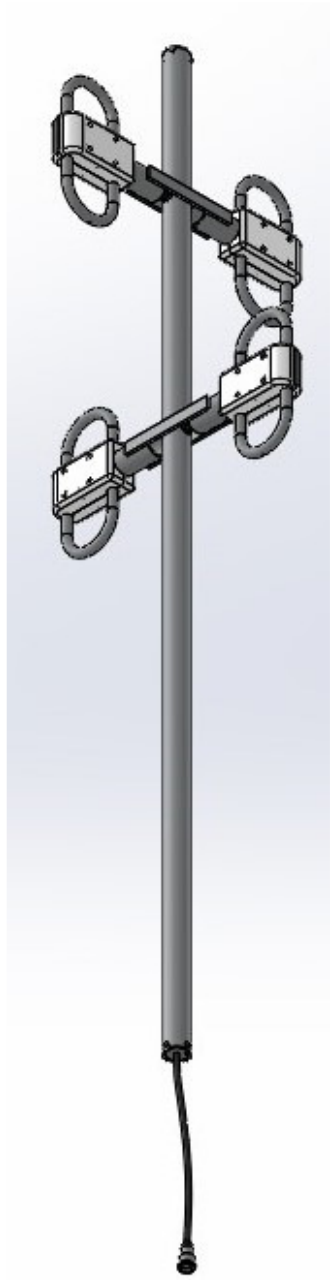
## UHF Omni Exposed Dipole Antenna

- Broadband Performance covers entire band
- 100% Welded Construction
  - Increased Durability
  - Decreased Installation time
- Internally routed cable harness
  - Protects harness from elements and animals
  - Prevents damage during installation
- Extensive Null-Fill in Elevation Pattern

Electrical Specifications	
Frequency Range	400-520 MHz
Gain	3 dBd
VSWR (Return Loss)	<1.5:1 (14 dB)
Passive IM 3 <sup>rd</sup> Order (2x20W)	-150 dBc
Peak Instantaneous Power (PIP)	25 kW
Power Input	500 W
Vertical Beamwidth	30°
Horizontal Beamwidth	Omni +/-0.5 dB
Input	7-16 DIN-Female D7 4.3-10 DIN-Female D4 20" pigtail

Mechanical Specifications	
Configuration	4 Dipoles (2 Bays) Turnstile stacked Single section support
Length	83"
Weight	11 lbs
Shipping Weight	lbs
Shipping Dimensions	L 89" W 19" H 19"
Mounting Area	20.0" x 1.9" diam. Aluminum
Suggested Clamps (not included)	PLMTKIT

Environmental Specifications	
Temperature Range	-40° to 140°F (-40° to 60°C)
Wind Velocity (Max)	150 MPH
Wind Velocity -1/2" Ice (Max)	125 MPH
Projected Area	1.1 ft <sup>2</sup> (no ice) 1.2 ft <sup>2</sup> (with ice)
Lateral Thrust @ 100mph	44 lbs



**Standard Elevation Pattern**

