

UHF Omni Exposed Dipole Dual Antenna

- Broadband Performance covers entire band
- 100% Welded Construction
 - Increased Durability
 - Decreased Installation time
- Internally routed cable harness
 - Protects harness from elements and animals
 - Prevents damage during installation

Electrical Specifications

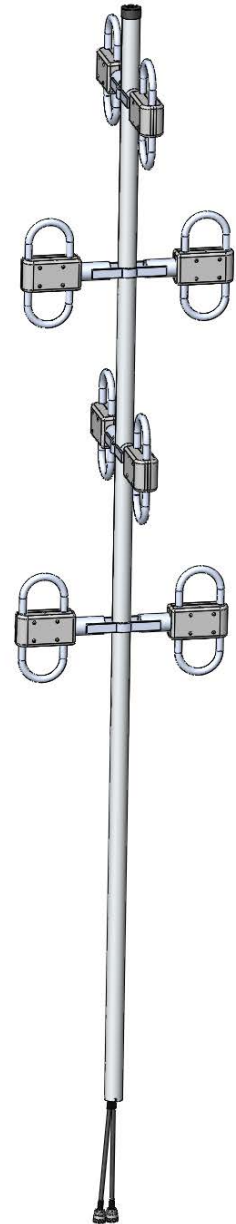
Frequency Range	400-520 MHz
Gain	3 dBd per input
VSWR (Return Loss)	<1.5:1 (14 dB)
Passive IM 3 rd Order (2x20W)	-150 dBc
Peak Instantaneous Power (PIP)	25 kW
Power Input	500 W
Vertical Beamwidth	2 x 30°
Horizontal Beamwidth	Omni +/-0.5 dB
Input	7-16 DIN-Female D7 4.3-10 DIN-Female D4

Mechanical Specifications

Configuration	8 Dipoles (4 Bays) Turnstile stacked Dual section support
Length	118"
Weight	23 lbs
Shipping Weight	31 lbs
Shipping Dimensions	L 124" W 19" H 19"
Mounting Area	20.0" x 1.9" diam. Aluminum
Suggested Clamps (not included)	PLMTKIT

Environmental Specifications

Temperature Range	-40° to 140°F (-40° to 60°C)
Wind Velocity (Max)	150 MPH
Wind Velocity -1/2" Ice (Max)	125 MPH
Projected Area	1.9 ft ² (no ice) 2.0 ft ² (with ice)
Lateral Thrust @ 100mph	76 lbs



Standard Elevation Pattern

