



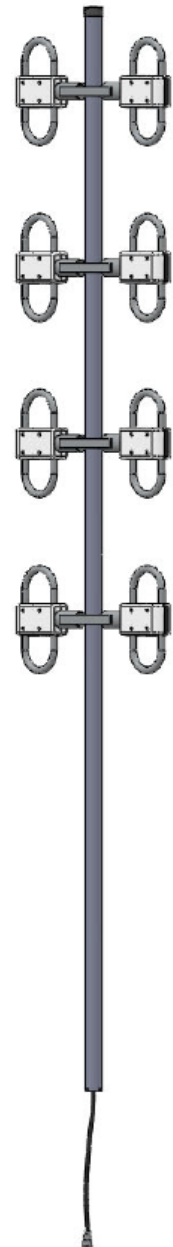
## UHF Directional Exposed Dipole Antenna

- Broadband Performance covers entire band
- 100% Welded Construction
  - Increased Durability
  - Decreased Installation time
- Internally routed cable harness
  - Protects harness from elements and animals
  - Prevents damage during installation

Electrical Specifications	
Frequency Range Dual Band	400-520 MHz
Gain	8 dBd
VSWR (Return Loss)	<1.5:1 (14 dB)
Passive IM 3 <sup>rd</sup> Order (2x20W)	-150 dBc
Peak Instantaneous Power (PIP)	25 kW
Power Input	250 W
Vertical Beamwidth	17°
Horizontal Beamwidth	74°
Input	7-16 DIN-Female D7 4.3-10 DIN-Female D4
Beam Tilt	N/A

Mechanical Specifications	
Configuration	8 Dipoles (4 Bays)
Length	120"
Weight	23 lbs
Shipping Weight	31 lbs
Shipping Dimensions	L 126" W 26.5" H 3.75"
Mounting Area	20.0" x 1.9" diam. Aluminum
Suggested Clamps (not included)	PLMTKIT-1

Environmental Specifications	
Temperature Range	-40° to 140°F (-40° to 60°C)
Wind Velocity (Max)	150 MPH
Wind Velocity -1/2" Ice (Max)	115 MPH
Projected Area	2.24 ft <sup>2</sup> (no ice) 2.84 ft <sup>2</sup> (with ice)
Lateral Thrust @ 100mph	89.6 lbs



### Elevation

