

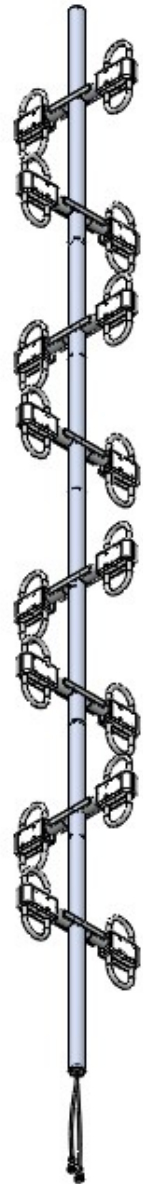
UHF Omni Exposed Dipole Antenna

- Broadband Performance covers entire band
- 100% Welded Construction
 - Increased Durability
 - Decreased Installation time
- Internally routed cable harness
 - Protects harness from elements and animals
 - Prevents damage during installation
- Dual input to provide increased capacity
- Extensive Null Fill in elevation pattern

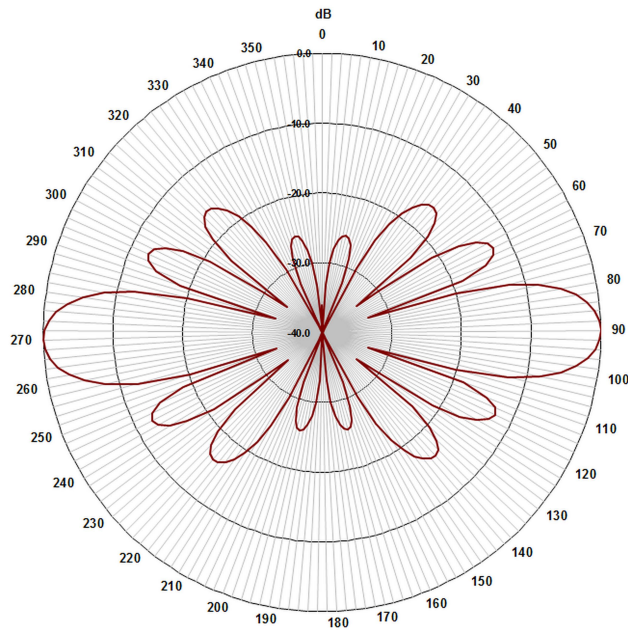
Electrical Specifications	
Frequency Range	400-520 MHz
Gain	6 dBd per input
VSWR (Return Loss)	<1.5:1 (14 dB)
Passive IM 3 rd Order (2x20W)	-150 dBc
Peak Instantaneous Power (PIP)	25 kW
Power Input	500 W per input
Vertical Beamwidth	2 x 16°
Horizontal Beamwidth	Omni +/-0.5 dB
Input	7-16 DIN-Female D7 4.3-10 DIN-Female D4
Beam Tilt	0° std or -3°

Mechanical Specifications	
Configuration	16 Dipoles (8 Bays) Turnstile stacked Dual input
Length	197"
Weight	44 lbs
Shipping Weight	128 lbs
Shipping Dimensions	L 210" W 18" H 18"
Mounting Area	30.0" x 1.9" diam. Aluminum
Suggested Clamps (not included)	PLMTKIT-1

Environmental Specifications	
Temperature Range	-40° to 140°F (-40° to 60°C)
Wind Velocity (Max)	150 MPH
Wind Velocity -1/2" Ice (Max)	125 MPH
Projected Area	3.5 ft ² (no ice) 3.8 ft ² (with ice)
Lateral Thrust @ 100mph	140 lbs



Standard Elevation Pattern



Azimuth Pattern

