



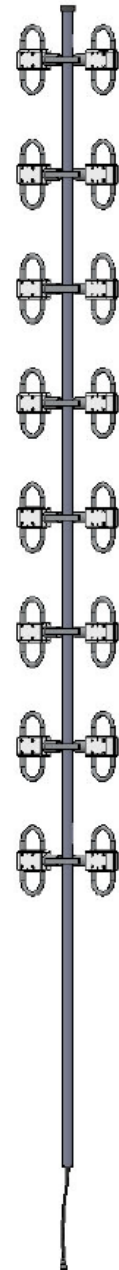
UHF Directional Exposed Dipole Antenna

- Broadband Performance covers entire band
- 100% Welded Construction
 - Increased Durability
 - Decreased Installation time
- Internally routed cable harness
 - Protects harness from elements and animals
 - Prevents damage during installation

Electrical Specifications	
Frequency Range Dual Band	400-520 MHz
Gain	11 dBd
VSWR (Return Loss)	<1.5:1 (14 dB)
Passive IM 3 rd Order (2x20W)	-150 dBc
Peak Instantaneous Power (PIP)	25 kW
Power Input	250 W
Vertical Beamwidth	8°
Horizontal Beamwidth	Offset
Input	7-16 DIN-Female D7 4.3-10 DIN-Female D4
Beam Tilt	N/A

Mechanical Specifications	
Configuration	16 Dipoles (8 Bays)
Length	198"
Weight	44 lbs
Shipping Weight	59 lbs
Shipping Dimensions	L 205" W 26.5" H 6.5"
Mounting Area	30.0" x 1.9" diam. Aluminum
Suggested Clamps (not included)	PLMTKIT-1

Environmental Specifications	
Temperature Range	-40° to 140°F (-40° to 60°C)
Wind Velocity (Max)	150 MPH
Wind Velocity -1/2" Ice (Max)	115 MPH
Projected Area	2.89 ft ² (no ice) 5.18 ft ² (with ice)
Lateral Thrust @ 100mph	115.6 lbs



Elevation

