

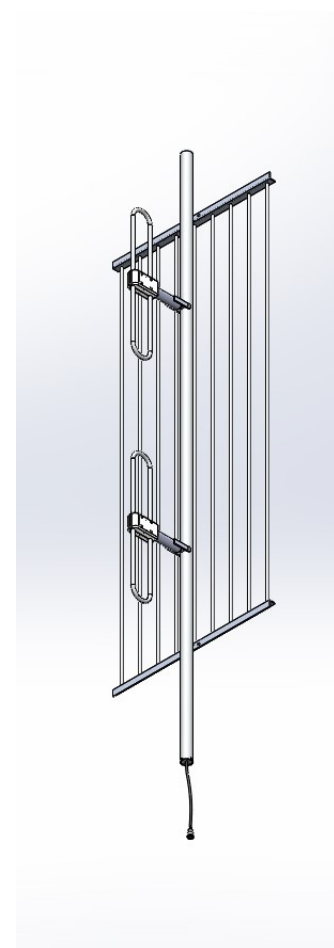
VHF 6UW`DUbY` Directional Exposed Dipole Antenna

- Broadband Performance covers entire band
- 100% Welded Construction
 - Increased Durability
 - Decreased Installation time
- Internally routed cable harness
 - Protects harness from elements and animals
 - Prevents damage during installation

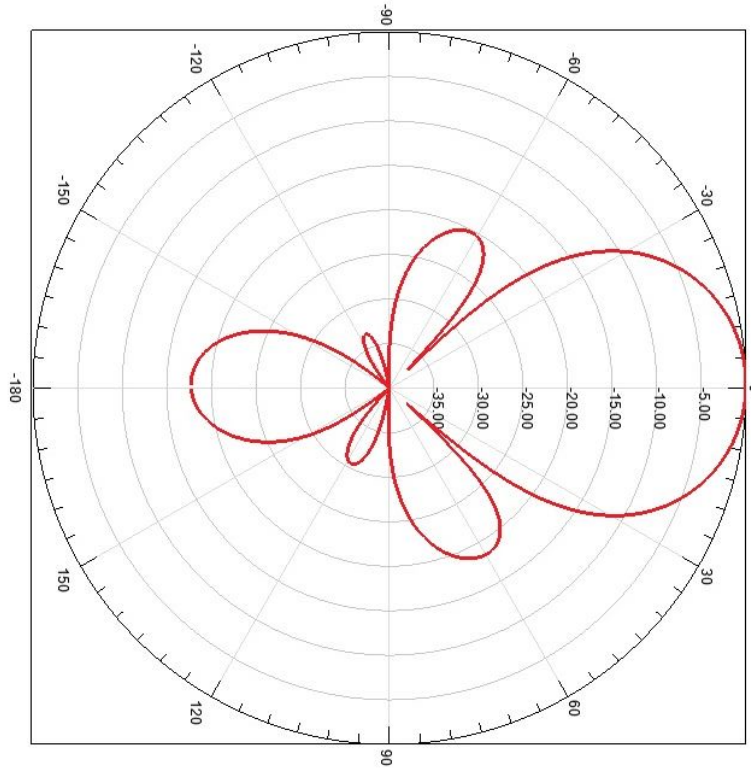
Electrical Specifications	
Frequency Range	136-174 MHz
Gain	8.6 dBd
VSWR (Return Loss)	<1.5:1 (14 dB)
Passive IM 3 rd Order (2x20W)	-150 dBc
Peak Instantaneous Power (PIP)	25 kW
Power Input	500 W
Vertical Beamwidth	34°
Horizontal Beamwidth	100°
Input	7-16 DIN-Female D7 4.3-10 DIN-Female D4
F/B Ratio	-17.5

Mechanical Specifications	
Configuration	2 Bays
Length	138"
Weight	46 lbs
Shipping Weight	52 lbs
Shipping Dimensions	L 146" W 46" H 8"
Mounting Area	24"
Suggested Clamps (not included)	PLMTKIT

Environmental Specifications	
Temperature Range	-40° to 140°F (-40° to 60°C)
Wind Velocity (Max)	150 MPH
Wind Velocity -1/2" Ice (Max)	115MPH
Projected Area	5.94ft ² (no ice) 10.57ft ² (with ice)
Lateral Thrust @ 100mph	237.6 lbs



Standard Elevation Pattern



Azimuth

