

# Product Data Sheet **ATC-GP1V4C**

## VHF Back Panel Directional Exposed Dipole Antenna

- Broadband Performance covers entire band
- 100% Welded Construction
  - Increased Durability
  - Decreased Installation time
- Internally routed cable harness
  - Protects harness from elements and animals
  - Prevents damage during installation

### Electrical Specifications

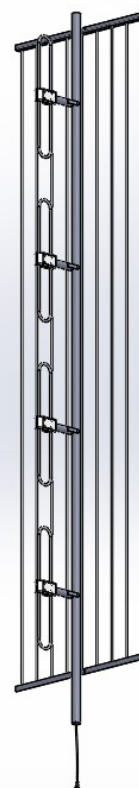
Frequency Range	136-174 MHz
Gain	11.6 dBd
VSWR (Return Loss)	<1.5:1 (14 dB)
Passive IM 3 <sup>rd</sup> Order (2x20W)	-150 dBc
Peak Instantaneous Power (PIP)	25 kW
Power Input	500 W
Vertical Beamwidth	17°
Horizontal Beamwidth	100°
Input	7-16 DIN-Female D7 4.3-10 DIN-Female D4
F/B Ratio	-17.5

### Mechanical Specifications

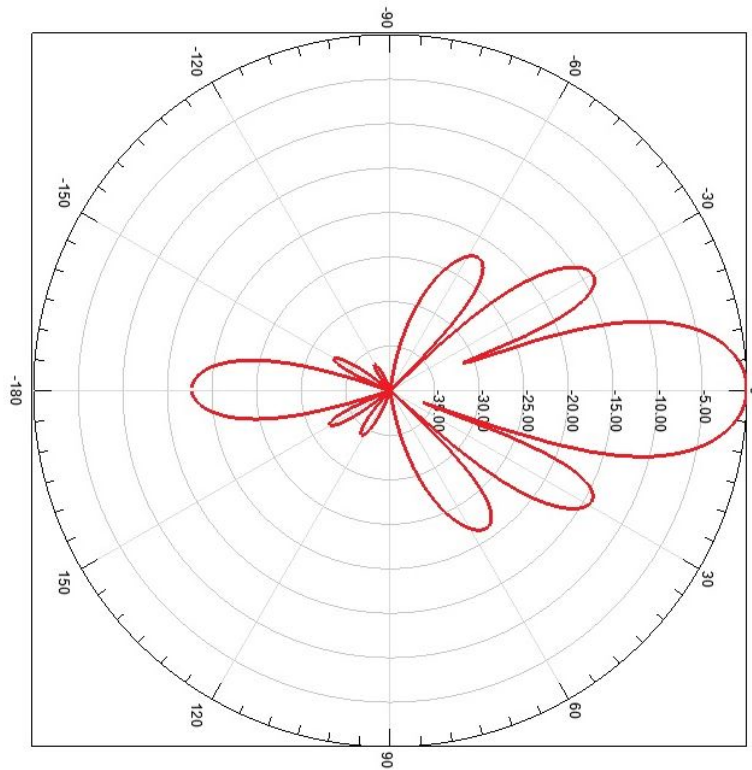
Configuration	4 Bays
Length	240"
Weight	56 lbs
Shipping Weight	63 lbs
Shipping Dimensions	L 248" W 46" H 8"
Mounting Area	24"
Suggested Clamps (not included)	PLMTKIT-1

### Environmental Specifications

Temperature Range	-40° to 140°F (-40° to 60°C)
Wind Velocity (Max)	150 MPH
Wind Velocity -1/2" Ice (Max)	115 MPH
Projected Area	12.3 ft <sup>2</sup> (no ice) 22.3 ft <sup>2</sup> (with ice)
Lateral Thrust @ 100mph	492 lbs



### Standard Elevation Pattern



### Azimuth

