



700-800MHz Sector 120° Panel

Electrical Specifications

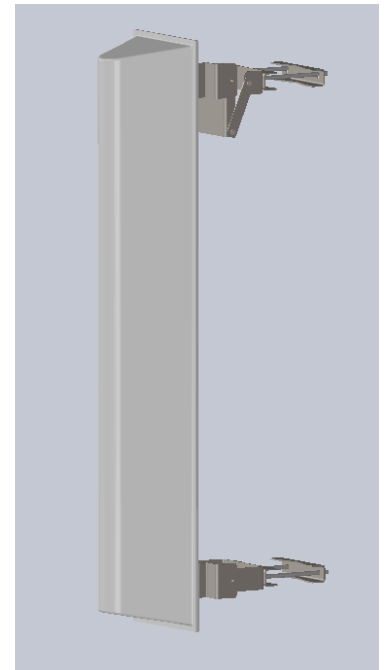
Frequency Range	746-870 MHz
Gain	9.4 dBd (11.5 dBi)
VSWR (Return Loss)	1.5 (13.98 dB)
Passive IM 3 rd Order (2x20W)	-150 dBc
Peak Instantaneous Power (PIP)	25 kW
Front to Back (dB)	17.5
Power Input	500 W avg
Azimuth HPBW	120°
Elevation HPBW	16°
Polarization	Vertical
Input	7-16 DIN-Female D7 4.3-10 DIN-Female D4

Mechanical Specifications

Length x Depth	48.59" x 10.5"
Width	10"
Weight	25.99 lbs
Shipping Weight	38.42 lbs
Shipping Dimensions	L 50.85" W 12" H 16"
Projected Area	3.19 ft ²
Lateral Thrust @ 100mph	127.55 lbf
Wind Gust Rating	150 mph
Mechanical Down Tilt	1° - 11°

Environmental Specifications

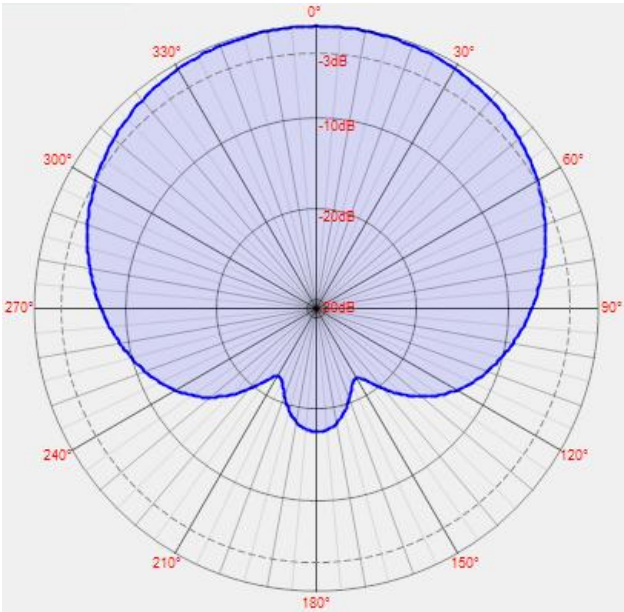
Operating Temperature	-40° to +140°F (-40°C to 60°C)
IP Rating	66



Rev 6/18/26

*Mount Hardware Included

Azimuth Pattern



Elevation Pattern

