



700-800MHz Sector 90° Panel

Electrical Specifications

Frequency Range	746-870 MHz
Gain	11.9 dBd (14.0 dBi)
VSWR (Return Loss)	1.5 (13.98 dB)
Passive IM 3 rd Order (2x20W)	-150 dBc
Peak Instantaneous Power (PIP)	25 kW
Front to Back (dB)	19.5
Power Input	500 W avg
Azimuth HPBW	90°
Elevation HPBW	16°
Polarization	Vertical
Input	7-16 DIN-Female D7 4.3-10 DIN-Female D4

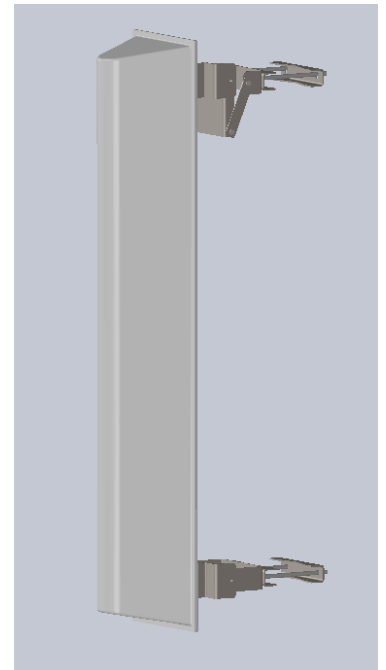
Mechanical Specifications

Length x Depth	48.59" x 10.5"
Width	10"
Weight	25.99 lbs
Shipping Weight	38.42 lbs
Shipping Dimensions	L 50.85" W 12" H 16"
Projected Area	3.19 ft ²
Lateral Thrust @ 100mph	127.55 lbf
Wind Gust Rating	150 mph
Mechanical Down Tilt	1° - 11°

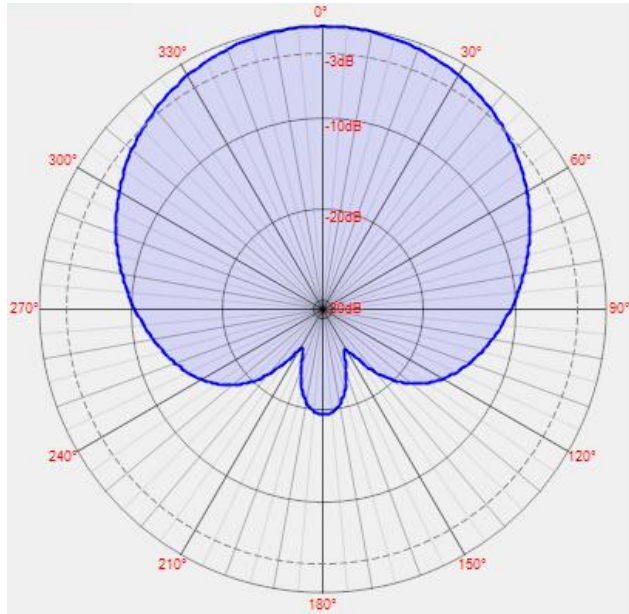
Environmental Specifications

Operating Temperature	-40° to +140°F (-40°C to 60°C)
IP Rating	66

**Mount Hardware Included*



Azimuth Pattern



Elevation Pattern

