



## 700-800MHz Sector 120° Panel

### Electrical Specifications

Frequency Range	746-870 MHz
Gain	12.4 dBd (14.5 dBi)
VSWR (Return Loss)	1.5 (13.98 dB)
Passive IM 3 <sup>rd</sup> Order (2x20W)	-150 dBc
Peak Instantaneous Power (PIP)	25 kW
Front to Back (dB)	18
Power Input	500 W avg
Azimuth HPBW	120°
Elevation HPBW	8.5°
Polarization	Vertical
Input	7-16 DIN-Female D7 4.3-10 DIN-Female D4

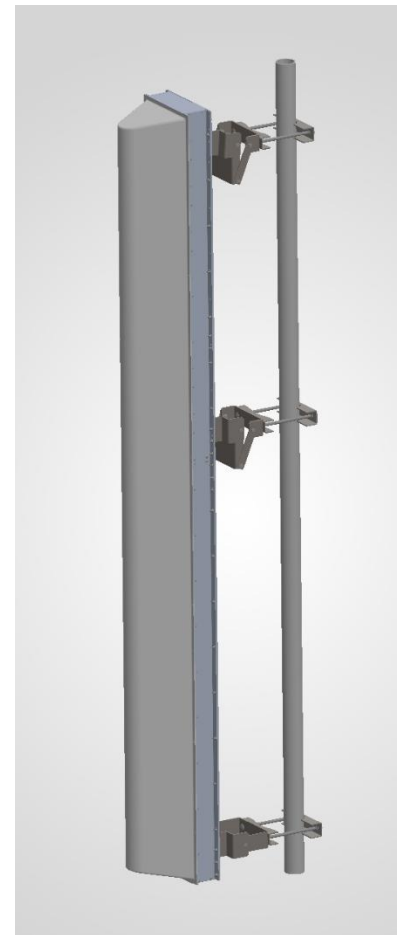
### Mechanical Specifications

Length x Depth	97.18" x 10.5"
Width	10"
Weight	51.98 lbs
Shipping Weight	76.84 lbs
Shipping Dimensions	L 101.7" W 12" H 16"
Projected Area	6.38 ft <sup>2</sup>
Lateral Thrust @ 100mph	255.1 lbf
Wind Gust Rating	150 mph
Mechanical Down Tilt	1° - 11°

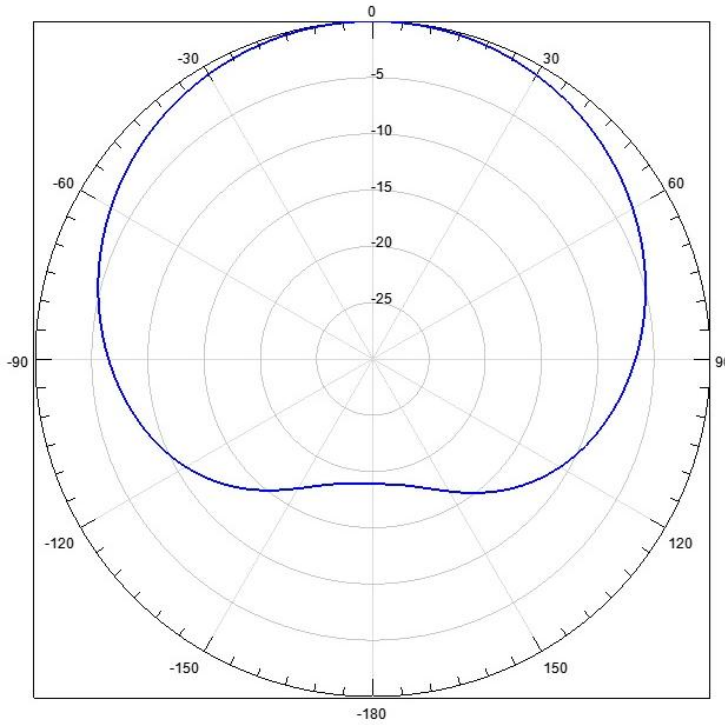
### Environmental Specifications

Operating Temperature	-40° to +140°F (-40°C to 60°C)
IP Rating	66

*\*Mount Hardware Included*



### Azimuth Pattern



### Elevation Pattern

