



700-800MHz Sector 65° Panel

Electrical Specifications

Frequency Range	746-870 MHz
Gain	15.9 dBd (18.0 dBi)
VSWR (Return Loss)	1.5 (13.98 dB)
Passive IM 3 rd Order (2x20W)	-150 dBc
Peak Instantaneous Power (PIP)	25 kW
Front to Back (dB)	18
Power Input	500 W avg
Azimuth HPBW	65°
Elevation HPBW	8.5°
Polarization	Vertical
Input	7-16 DIN-Female D7 4.3-10 DIN-Female D4

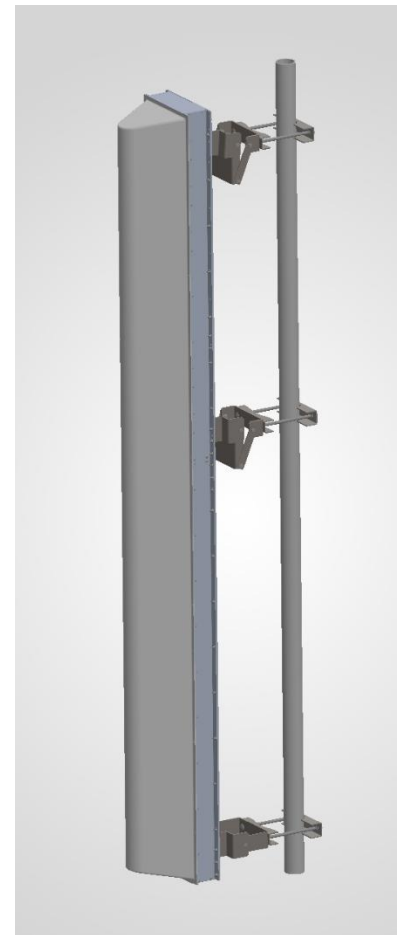
Mechanical Specifications

Length x Depth	97.18" x 10.5"
Width	10"
Weight	56.5 lbs
Shipping Weight	81.36 lbs
Shipping Dimensions	L 101.7" W 12" H 16"
Projected Area	6.38 ft ²
Lateral Thrust @ 100mph	255.1 lbf
Wind Gust Rating	150 mph
Mechanical Down Tilt	1° - 11°

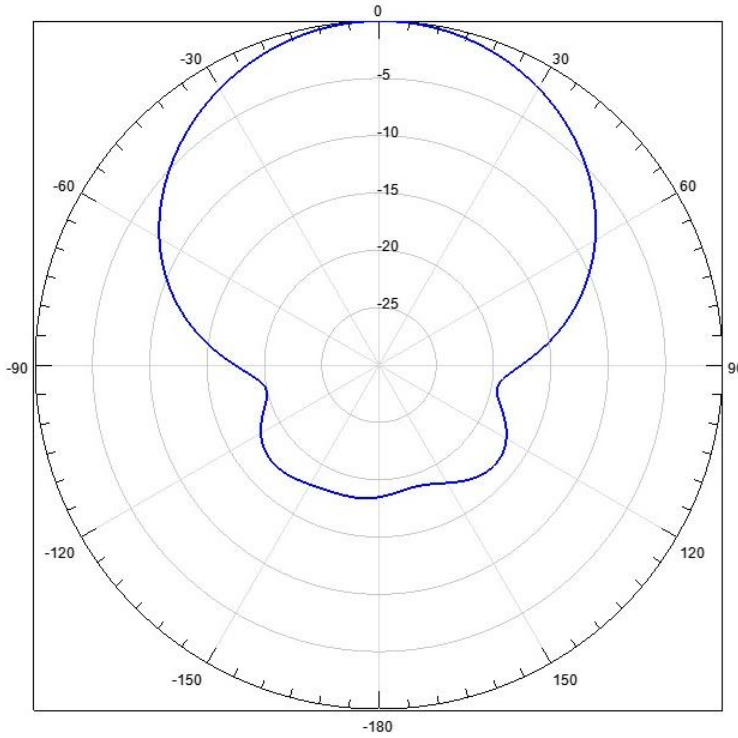
Environmental Specifications

Operating Temperature	-40° to +140°F (-40°C to 60°C)
IP Rating	66

**Mount Hardware Included*



Azimuth Pattern



Elevation Pattern

