



## Wide Sector Panel

### Electrical Specifications

Frequency Range	746-870 MHz
Sector HPBW	120°
Gain	12.5 dBd
VSWR (Return Loss)	1.5 (13.98 dB)
Front to Back (dB)	20
Power Input	500 W avg
Vertical Beamwidth	9°
Polarization	Vertical
Input	7-16 DIN-Female D7 4.3-10 DIN-Female D4

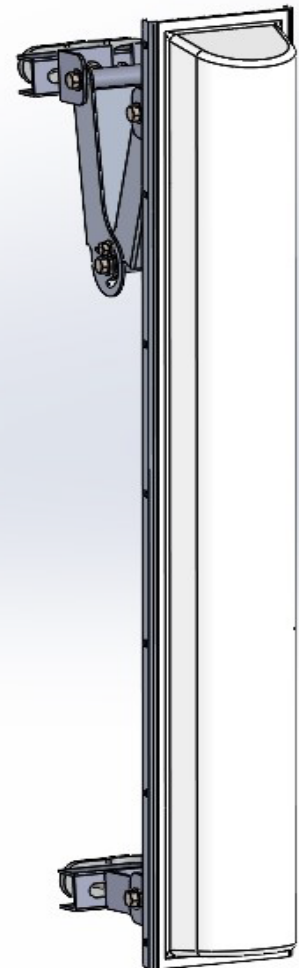
### Mechanical Specifications

Length x Depth	96" x 6"
Width	12"
Weight	25 lbs
Shipping Weight	31 lbs
Shipping Dimensions	L 100" W 14" H 12"
Projected Area	9.33 ft <sup>2</sup>
Lateral Thrust @ 100mph	373 lbf
Wind Gust Rating	125 mph

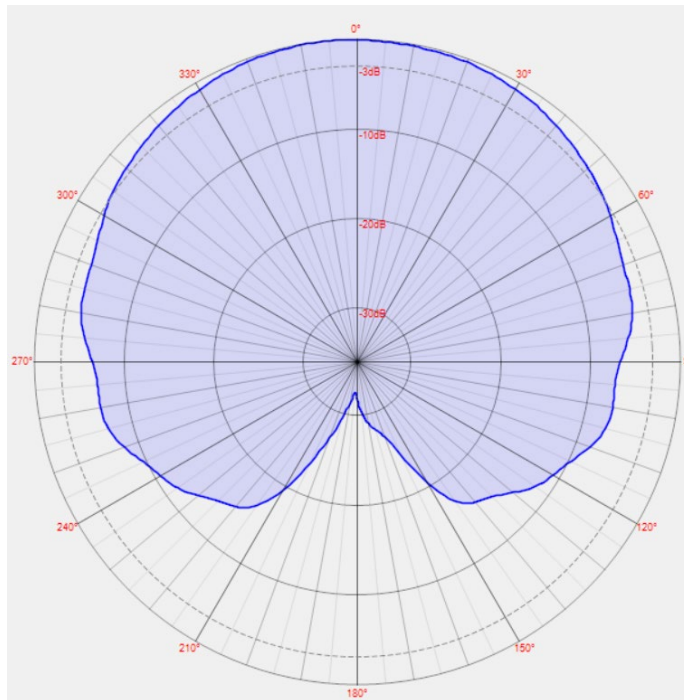
### Environmental Specifications

Operating Temperature	-40° to +140°F (-40°C to 60°C)
IP Rating	66

*\*Mount Hardware Included*



## Azimuth Pattern



## Elevation Pattern

