

Product Data Sheet **ATC-HP100D04-631**

High Performance Antenna

- Shielded antenna assures pattern performance to FCC Part 101, Category A.

10.0 to 11.7 GHz

- Broadband performance covers entire band.

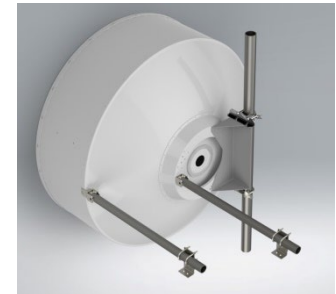
Dual Polarized, 4 ft Diameter

- Ideal for higher capacity routes, shorter hop length.



Electrical Specifications

Frequency Band, GHz	10.0 to 11.7
Gain, dBi (Bottom, Mid, Top)	39.8 / 40.4 / 41.0
Polarization Type	Dual
Cross-Polar Discrimination, dB	30
Front to Back Ratio, dB	66
Antenna Beamwidth, degrees	1.7
VSWR (Return Loss, dB)	<1.3:1 (>17.7)
Radiation Pattern Envelope (RPE)	TBA
Pattern Compliance Types	FCC Part 101, Category A
Input Connector	CPR90G
PIM 3 rd Order (2x20W), dBc	-150
Power Input, W	250



Mechanical Specifications

Mounting Pipe Diameter, mm / in	115 / 4.5
Azimuth Adjust Range, degs.	+ / - 15
Elevation Adjust Range, degs.	+ / - 15
Antenna Diameter, nom., m / ft	1.2 / 4
Antenna Weight, kg / lbs	32 / 70.5
Shipping Weight, kg / lbs	59 / 130
Shipping Dimensions, mm / in	L 1360 / 53.5 W 380 / 15.0 H 1520 / 59.8
Antenna Color	Gray
Radome Color	Gray
Radome Type	Polymer / Fabric
Logo on Radome Included	Yes

Environmental Specifications

Temperature Range, °F / °C	-40 to 140 / -40 to 60
Wind Velocity, Operational km/hr / mph	200 / 125
Wind Velocity, Survival km/hr / mph	250 / 155