

# Product Data Sheet **ATC-HP100S08-631**

## High Performance Antenna

- Shielded antenna assures pattern performance to FCC Part 101, Category A.

## 10.0 to 11.7 GHz

- Broadband performance covers entire band.

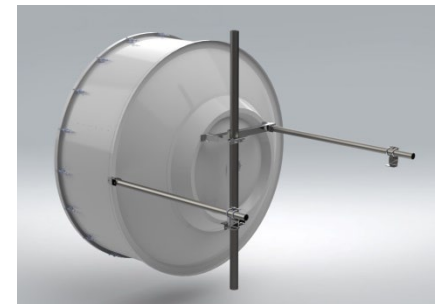
## Single Polarized, 8 ft Diameter

- Ideal for higher capacity routes, longer hop length.



### Electrical Specifications

|  |                          |
|--|--------------------------|
| Frequency Band, GHz                    | 10.0 to 11.7             |
| Gain, dBi (Bottom, Mid, Top)           | 45.4 / 46.1 / 46.8       |
| Polarization Type                      | Single                   |
| Cross-Polar Discrimination, dB         | 30                       |
| Front to Back Ratio, dB                | 72                       |
| Antenna Beamwidth, degrees             | 0.9                      |
| VSWR (Return Loss, dB)                 | <1.3:1 (>17.7)           |
| Radiation Pattern Envelope (RPE)       | TBA                      |
| Pattern Compliance Types               | FCC Part 101, Category A |
| Input Connector                        | CPR90G                   |
| PIM 3 <sup>rd</sup> Order (2x20W), dBc | -150                     |
| Power Input, W                         | 250                      |



### Mechanical Specifications

|                                 |   |
|---------------------------------|---|
| Mounting Pipe Diameter, mm / in | 115 / 4.5                                       |
| Azimuth Adjust Range, degs.     | + / - 5   |
| Elevation Adjust Range, degs.   | + / - 5   |
| Antenna Diameter, nom., m / ft  | 2.4 / 8   |
| Antenna Weight, kg / lbs        | 187 / 412                                       |
| Shipping Weight, kg / lbs       | 318 / 701                                       |
| Shipping Dimensions, mm / in    | L 2380 / 93.7<br>W 1130 / 44.5<br>H 2250 / 88.6 |
| Antenna Color                   | Gray  |
| Radome Color                    | Gray  |
| Radome Type                     | Fabric  |
| Logo on Radome Included         | Yes   |

### Environmental Specifications

|  |                        |
|--|------------------------|
| Temperature Range, °F / °C             | -40 to 140 / -40 to 60 |
| Wind Velocity, Operational km/hr / mph | 200 / 125              |
| Wind Velocity, Survival km/hr / mph    | 250 / 155              |