

Product Data Sheet **ATC-HP57D10-631**

High Performance Antenna

- Shielded antenna assures pattern performance to FCC Part 101, Category A.

5.725 to 6.875 GHz

- Broadband performance covers entire band.

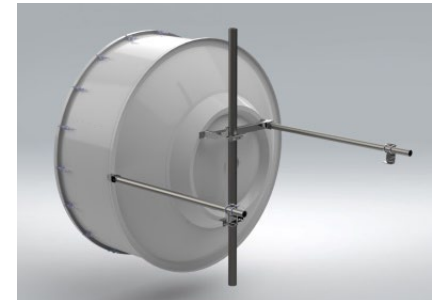
Dual Polarized, 10 ft Diameter

- Ideal for higher capacity routes, longer hop length.



Electrical Specifications

| | |
|--|--------------------------|
| Frequency Band, GHz | 5.725 to 6.875 |
| Gain, dBi (Bottom, Mid, Top) | 42.4 / 43.2 / 44.0 |
| Polarization Type | Dual |
| Cross-Polar Discrimination, dB | 30 |
| Front to Back Ratio, dB | 73 |
| Antenna Beamwidth, degrees | 1.1 |
| VSWR (Return Loss, dB) | <1.3:1 (>17.7) |
| Radiation Pattern Envelope (RPE) | TBA |
| Pattern Compliance Types | FCC Part 101, Category A |
| Input Connector | CPR137G |
| PIM 3 rd Order (2x20W), dBc | -150 |
| Power Input, W | 250 |



Mechanical Specifications

| | |
|---------------------------------|--|
| Mounting Pipe Diameter, mm / in | 115 / 4.5 |
| Azimuth Adjust Range, degs. | + / - 5 |
| Elevation Adjust Range, degs. | + / - 5 |
| Antenna Diameter, nom., m / ft | 3.0 / 10 |
| Antenna Weight, kg / lbs | 263 / 580 |
| Shipping Weight, kg / lbs | 513 / 1131 |
| Shipping Dimensions, mm / in | L 3410 / 134.3 W 1930 / 76.0 H 1170 / 46.1 |
| Antenna Color | Gray |
| Radome Color | Gray |
| Radome Type | Fabric |
| Logo on Radome Included | Yes |

Environmental Specifications

| | |
|--|------------------------|
| Temperature Range, °F / °C | -40 to 140 / -40 to 60 |
| Wind Velocity, Operational km/hr / mph | 200 / 125 |
| Wind Velocity, Survival km/hr / mph | 250 / 155 |