

Product Data Sheet **ATC-HP57S08-631**

High Performance Antenna

- Shielded antenna assures pattern performance to FCC Part 101, Category A.

5.725 to 6.875 GHz

- Broadband performance covers entire band.

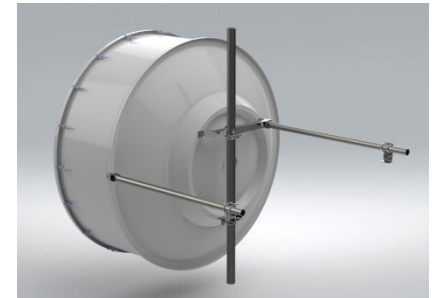
Single Polarized, 8 ft Diameter

- Ideal for higher capacity routes, longer hop length.



Electrical Specifications

Frequency Band, GHz	5.725 to 6.875
Gain, dBi (Bottom, Mid, Top)	40.5 / 41.3 / 42.1
Polarization Type	Single
Cross-Polar Discrimination, dB	30
Front to Back Ratio, dB	70
Antenna Beamwidth, degrees	1.3
VSWR (Return Loss, dB)	<1.3:1 (>17.7)
Radiation Pattern Envelope (RPE)	TBA
Pattern Compliance Types	FCC Part 101, Category A
Input Connector	CPR137G
PIM 3 rd Order (2x20W), dBc	-150
Power Input, W	250



Mechanical Specifications

Mounting Pipe Diameter, mm / in	115 / 4.5
Azimuth Adjust Range, degs.	+ / - 5
Elevation Adjust Range, degs.	+ / - 5
Antenna Diameter, nom., m / ft	2.4 / 8
Antenna Weight, kg / lbs	187 / 412
Shipping Weight, kg / lbs	318 / 701
Shipping Dimensions, mm / in	L 2380 / 93.7 W 1130 / 44.5 H 2250 / 88.6
Antenna Color	Gray
Radome Color	Gray
Radome Type	Fabric
Logo on Radome Included	Yes

Environmental Specifications

Temperature Range, °F / °C	-40 to 140 / -40 to 60
Wind Velocity, Operational km/hr / mph	200 / 125
Wind Velocity, Survival km/hr / mph	250 / 155