

Product Data Sheet **ATC-HPW59S10-631**

High Performance Antenna

- Shielded antenna assures pattern performance to FCC Part 101, Category A.

5.925 to 7.125 GHz

- Broadband performance covers entire band.

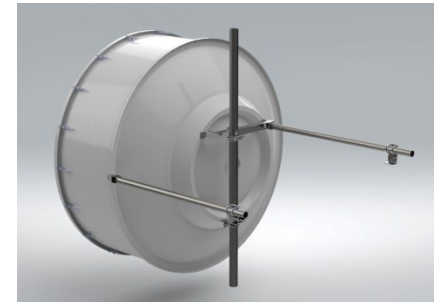
Single Polarized, 10 ft Diameter

- Ideal for higher capacity routes, longer hop length.



Electrical Specifications

Frequency Band, GHz	5.925 to 7.125
Gain, dBi (Bottom, Mid, Top)	42.7 / 43.5 / 44.3
Polarization Type	Single
Cross-Polar Discrimination, dB	30
Front to Back Ratio, dB	73
Antenna Beamwidth, degrees	1.1
VSWR (Return Loss, dB)	<1.3:1 (>17.7)
Radiation Pattern Envelope (RPE)	TBA
Pattern Compliance Types	FCC Part 101, Category A
Input Connector	CPR137G
PIM 3 rd Order (2x20W), dBc	-150
Power Input, W	250



Mechanical Specifications

Mounting Pipe Diameter, mm / in	115 / 4.5
Azimuth Adjust Range, degs.	+ / - 5
Elevation Adjust Range, degs.	+ / - 5
Antenna Diameter, nom., m / ft	3.0 / 10
Antenna Weight, kg / lbs	263 / 580
Shipping Weight, kg / lbs	513 / 1131
Shipping Dimensions, mm / in	L 3410 / 134.3 W 1930 / 76.0 H 1170 / 46.1
Antenna Color	Gray
Radome Color	Gray
Radome Type	Fabric
Logo on Radome Included	Yes

Environmental Specifications

Temperature Range, °F / °C	-40 to 140 / -40 to 60
Wind Velocity, Operational km/hr / mph	200 / 125
Wind Velocity, Survival km/hr / mph	250 / 155