

870-970 MHz Public Safety Panel

- **Broadband Performance covers 800 & 900 MHz Bands**
- **Excellent solution for hard to cover indoor and outdoor areas**
- **Small package with integral mount allows quick installation**
- **Available with multiple connector options**

Electrical Specifications

Frequency Range	870-970 MHz	
Gain	7 dBd	
VSWR (Return Loss)	<1.5:1 (14dB)	
Passive IM 3 rd Order (2x20W)	-150 dBc	
Peak Instantaneous Power (PIP)	25 kW	
Power Input	120 W	
Vertical Beamwidth	56°	
Horizontal Beamwidth	65°	
Input	7-16 DIN Female	D7
	4.3-10 DIN Female	D4



Mechanical Specifications

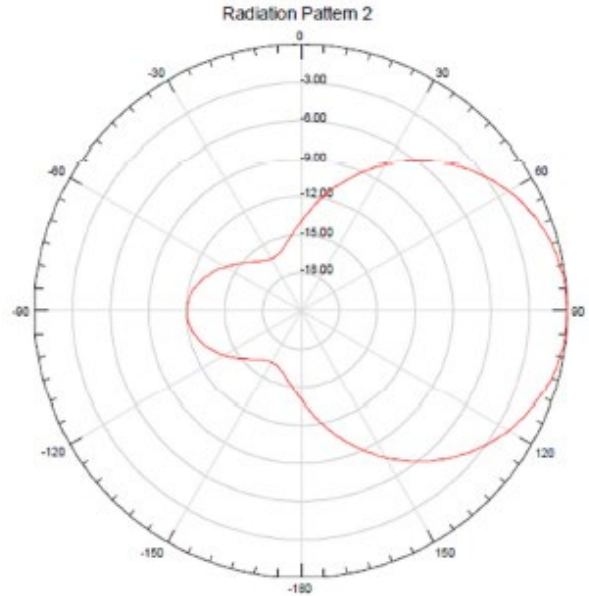
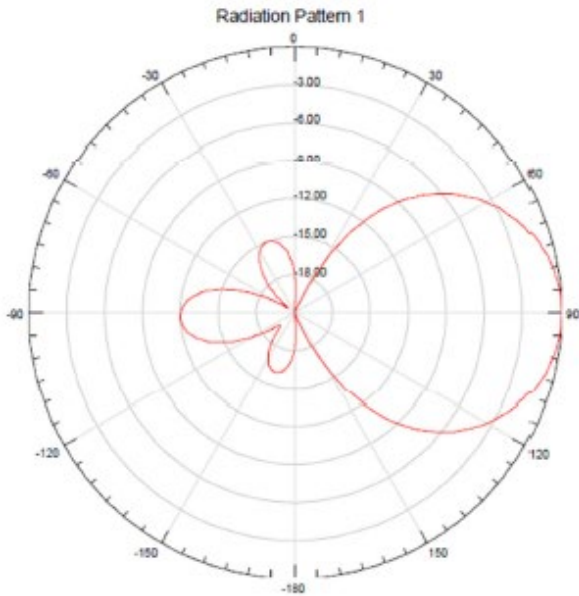
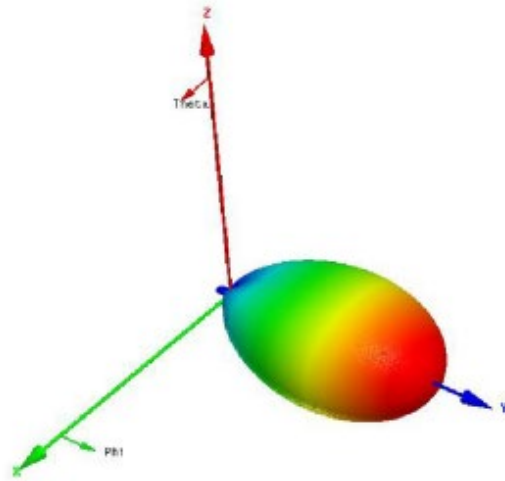
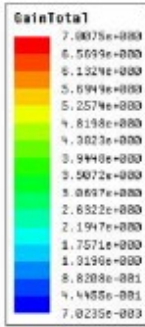
Configuration	Panel	
Length x Width	12.5" x 12.5"	
Depth	3.5"	
Weight	3.5 lbs	
Shipping Weight	4.0 lbs	
Shipping Dimensions	L 13"	
	W 13"	
	H 7"	

Environmental Specifications

Operating Temperature	-40° to +140°F (-40°C to 60°C)
Wind Velocity (Max)	125 MPH
Projected Area	1.0 ft ²
Lateral Thrust @ 100mph	40 lbs.

**Mount Hardware Included*

Radiation Patterns



Elevation

Azimuth

(3dB per Scale)